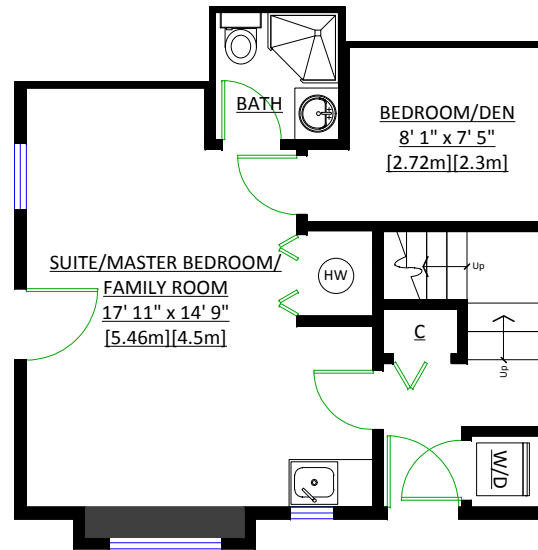
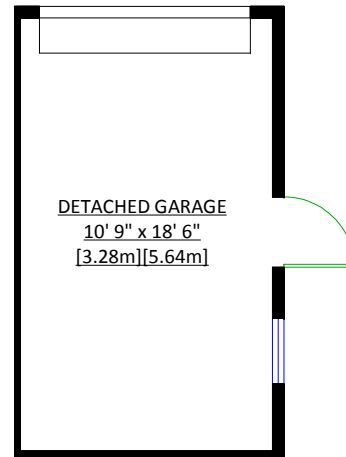
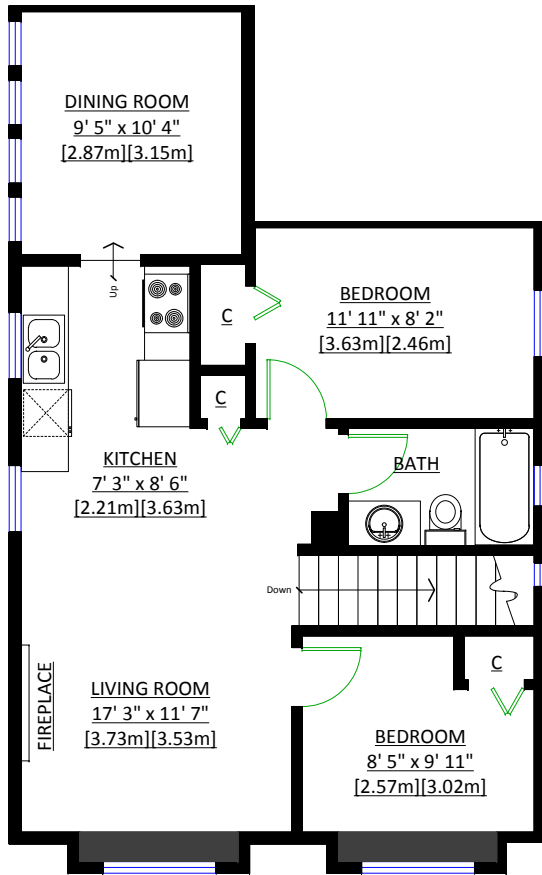




Toni L. Pohl PREC\*

604.725.6702

toni@tonipohl.com www.tonipohl.com



MAIN LEVEL

Floor Area: 701 Sq. Ft. [65 sq. m.]

LOWER LEVEL

Floor Area: 460 Sq. Ft. [43 sq. m.]

2951 Victoria Drive, Vancouver, B.C

Totals\*\*

Main Level: 701 sq. ft. 65 sq. m.

Lower Level: 460 sq. ft. 43 sq. m.

Total: 1,161 sq. ft. 108 sq. m.

Garage: 220 sq. ft. 20 sq. m.

\*\* Approx. based on interior measurements to exterior walls  
\*\* Total square footage not taken from original blueprints

