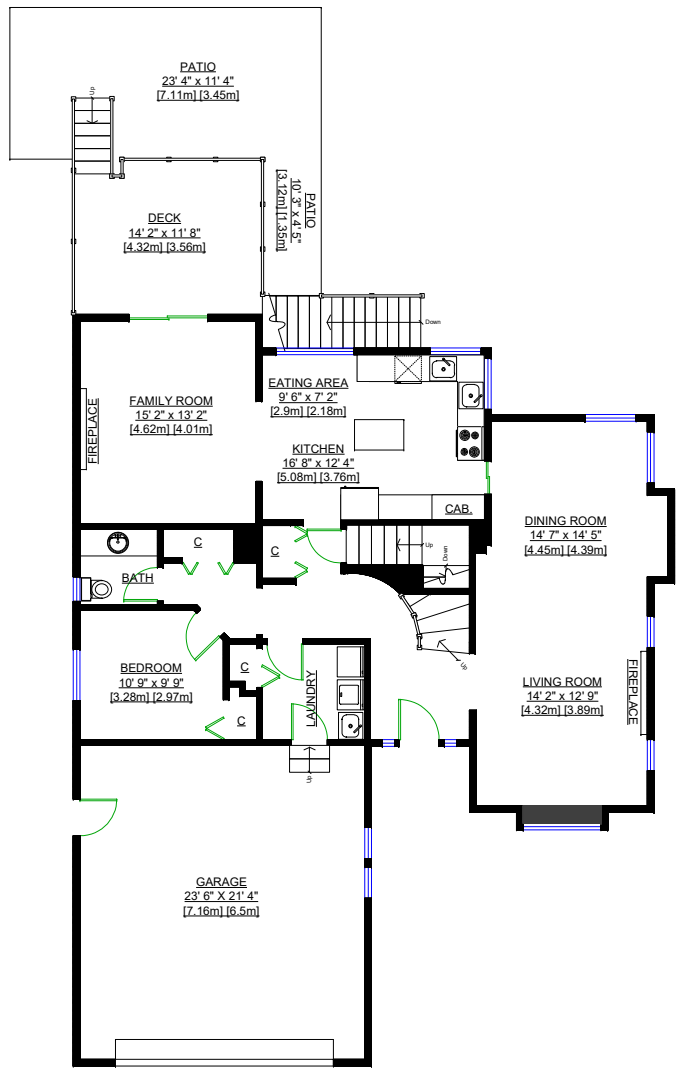
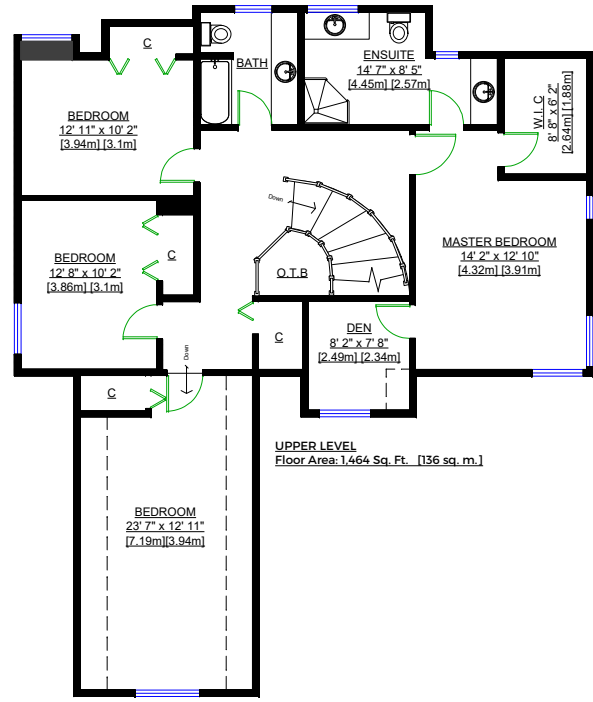




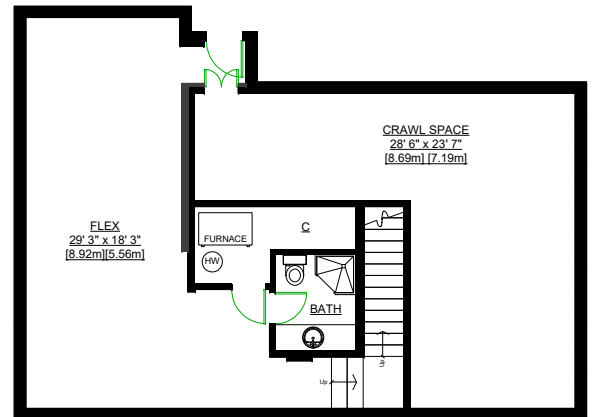
Yannica Dai
604.886.8883



MAIN LEVEL
Floor Area: 1,347 Sq. Ft. [125 sq. m.]



UPPER LEVEL
Floor Area: 1,464 Sq. Ft. [136 sq. m.]



LOWER LEVEL
Floor Area: 702 Sq. Ft. [65 sq. m.]

**2630 Temple Knoll Drive,
North Vancouver, B.C**

Totals**		
MAIN LEVEL		
Floor:	1,267 sq. ft.	118 sq. m.
Exterior Wall:	80 sq. ft.	7 sq. m.
TOTAL:	1,347 sq. ft.	125 sq. m.
UPPER LEVEL		
Floor:	1,367 sq. ft.	127 sq. m.
Exterior Walls:	97 sq. ft.	9 sq. m.
TOTAL:	1,464 sq. ft.	136 sq. m.
LOWER LEVEL		
Floor:	613 sq. ft.	57 sq. m.
Exterior Walls:	89 sq. ft.	8 sq. m.
TOTAL:	702 sq. ft.	65 sq. m.
GRAND TOTAL:	3,513 sq. ft.	326 sq. m.
Garage:	534 sq. ft.	50 sq. m.
Crawl Space:	472 sq. ft.	44 sq. m.
Patio:	297 sq. ft.	28 sq. m.
Deck:	177 sq. ft.	16 sq. m.
Lower Entry:	47 sq. ft.	4 sq. m.

** Approx. based on interior measurements to exterior walls
 ** Total square footage not taken from original blueprints
 ** Total square footage includes under-height areas

