

355 4th Street East, North Vancouver

Totals**

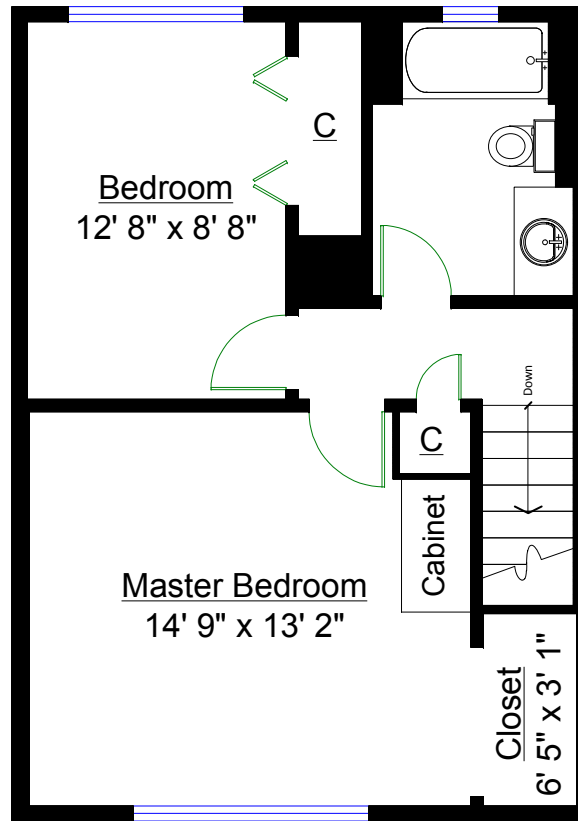
Main Level:	500 sq. ft.
Upper Level:	520 sq. ft.
Lower Level:	500 sq. ft.
TOTAL:	1,520 sq. ft.

Other Areas

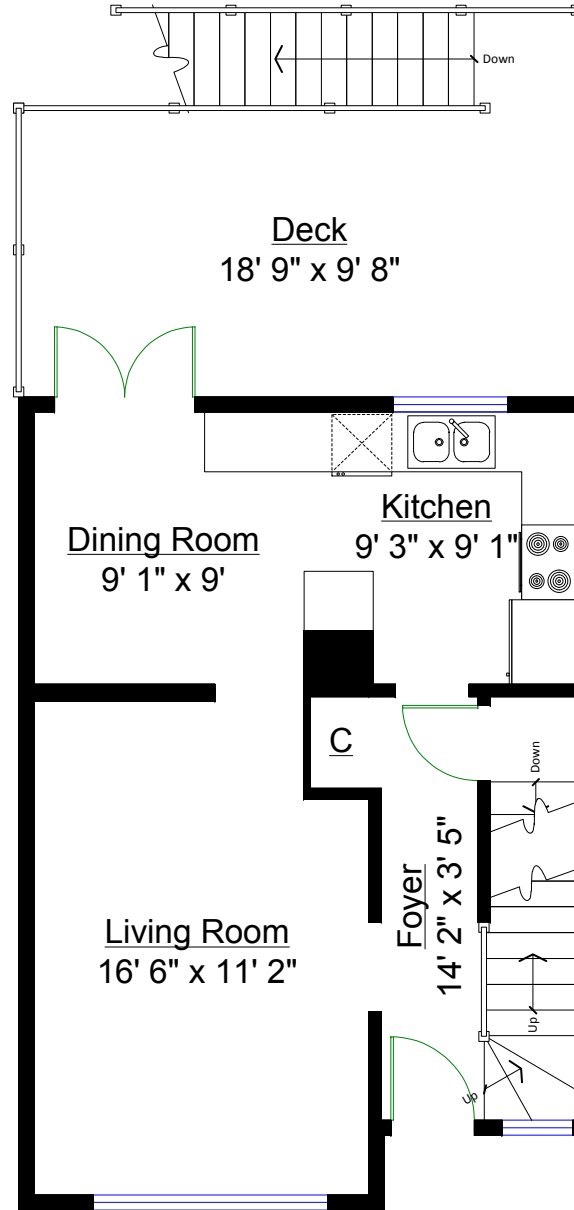
Deck:	232 sq. ft.
-------	-------------



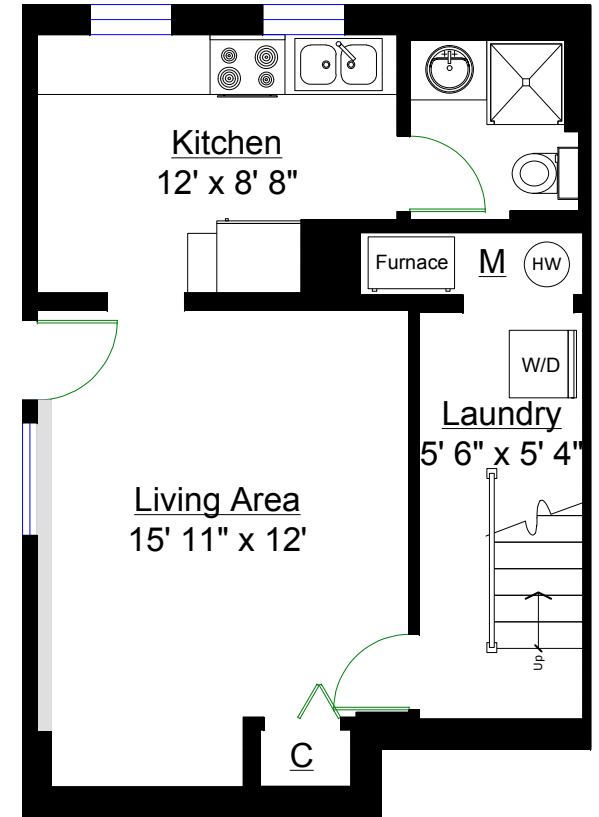
Kane Schutz
604-307-7570



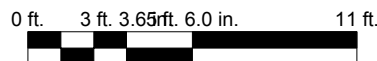
UPPER LEVEL



MAIN LEVEL



LOWER LEVEL



** Approx. based on interior measurements to exterior walls
** Total square footage not taken from original blueprints

