

BC OnLine



BC OnLine Land Title Internet Service
Provided in co-operation with
Land Title and Survey Authority

LAND TITLE AND SURVEY AUTHORITY - DOCUMENT RETRIEVAL		WEB REQUEST	
CLIENT NAME:	BC ONLINE HELP DESK WEB		
ADDRESS:	400A 4000 SEYMOUR PLACE VICTORIA BC V8X 5J8		
PICK-UP INSTRUCTIONS:			
USER ID:	PA34490	APPLICATION NO.:	LMS1757 LM PAGES: 044
ACCOUNT NO.:	384796	REQUESTED AT:	06-08-23 08:45
REFERENCE NO.:	U96683	FOLIO NO.:	
REMARKS:			

BC OnLine Land Title Fax Service

Help Desk Victoria (250) 953-8200
In B.C. 1-800-663-6102
Administration Office ... (250) 953-8250
Fax Number (250) 953-8222

Persons who need to rely on a plan for legal purposes must examine the official version at the Land Title Office in which the plan is deposited.

The bylaw and common property sheets attached to strata plans have been repealed. Information regarding the bylaws and/or dealings affecting the common property of strata plans must be obtained from the general index and/or common property index on ALTOS. Refer to the BC OnLine user guide for access information.

STRATA PLAN OF LOT E BLOCK 90, DISTRICT LOT 541, PLAN 13782.

STRATA PLAN LMS 1757

DEPOSITED AND REGISTERED
IN THE LAND TITLE OFFICE
AT NEW WESTMINSTER, B.C.
THIS 12th DAY OF DEC., 1994

"CITY OF VANCOUVER"

ASSISTANT DEPUTY REGISTRAR

BH447995 - BH448143

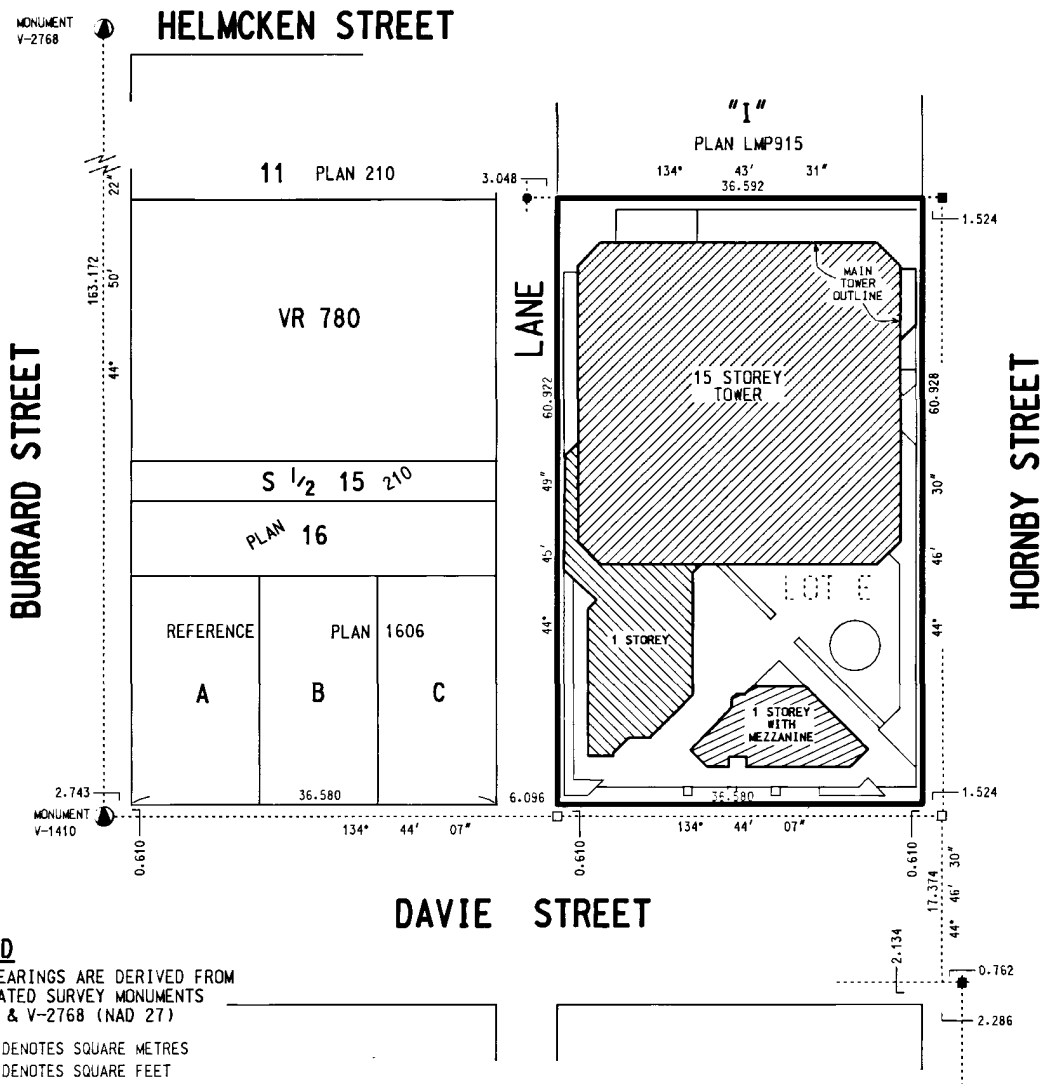
SCALE 1:500

CIVIC ADDRESS



"LONDON PLACE"
1177 HORNBY STREET
VANCOUVER, B.C.

(ALL DIMENSIONS ARE IN METRES)



LEGEND

GRID BEARINGS ARE DERIVED FROM
INTEGRATED SURVEY MONUMENTS
V-1410 & V-2768 (NAD 27)

- m² DENOTES SQUARE METRES
- S.F. DENOTES SQUARE FEET
- S.L. DENOTES STRATA LOT
- PT. S.L. DENOTES PART OF STRATA LOT
- ⊙ DENOTES COMMON PROPERTY
- ① DENOTES LIMITED COMMON PROPERTY FOR THE EXCLUSIVE USE OF S.L. 1
- ① (typical) DENOTES LIMITED COMMON PROPERTY FOR THE EXCLUSIVE USE OF STRATA LOTS 113 THROUGH 140 INCLUSIVE.
- ① (typical) DENOTES LIMITED COMMON PROPERTY FOR THE EXCLUSIVE USE OF RESIDENTIAL STRATA LOTS
- RES DENOTES LIMITED COMMON PROPERTY FOR THE EXCLUSIVE USE OF COMMERCIAL STRATA LOTS
- COM DENOTES LIMITED COMMON PROPERTY FOR THE EXCLUSIVE USE OF COMMERCIAL STRATA LOTS
- DENOTES STANDARD IRON POST FOUND
- DENOTES LEAD PLUG FOUND
- DENOTES LEAD PLUG SET
- ⊙ DENOTES INTEGRATED SURVEY MONUMENTS FOUND

I, J.J. WARD OF SURREY, B.C.,
BRITISH COLUMBIA LAND SURVEYOR,
HEREBY CERTIFY THAT THE BUILDING
ERECTED ON THE PARCEL DESCRIBED
ABOVE IS WHOLLY WITHIN THE EXTERNAL
BOUNDARIES OF THAT PARCEL.

Dated at SURREY, B.C.
This 25th day of NOVEMBER, 1994.

J.J. Ward B.C.L.S.

THE ADDRESS FOR SERVICE OF DOCUMENTS
ON THE STRATA CORPORATION IS:
THE OWNERS, STRATA PLAN LMS 1757
1001 - 601 WEST BROADWAY
VANCOUVER, B.C.
V5Z 4C2

McELHANNEY ASSOCIATES
PROFESSIONAL LAND SURVEYORS
13160 88th AVENUE
SURREY, B.C. V3W 3K3
TEL. (604) 596 0391
FILE 502 05741-6 (REV.1)

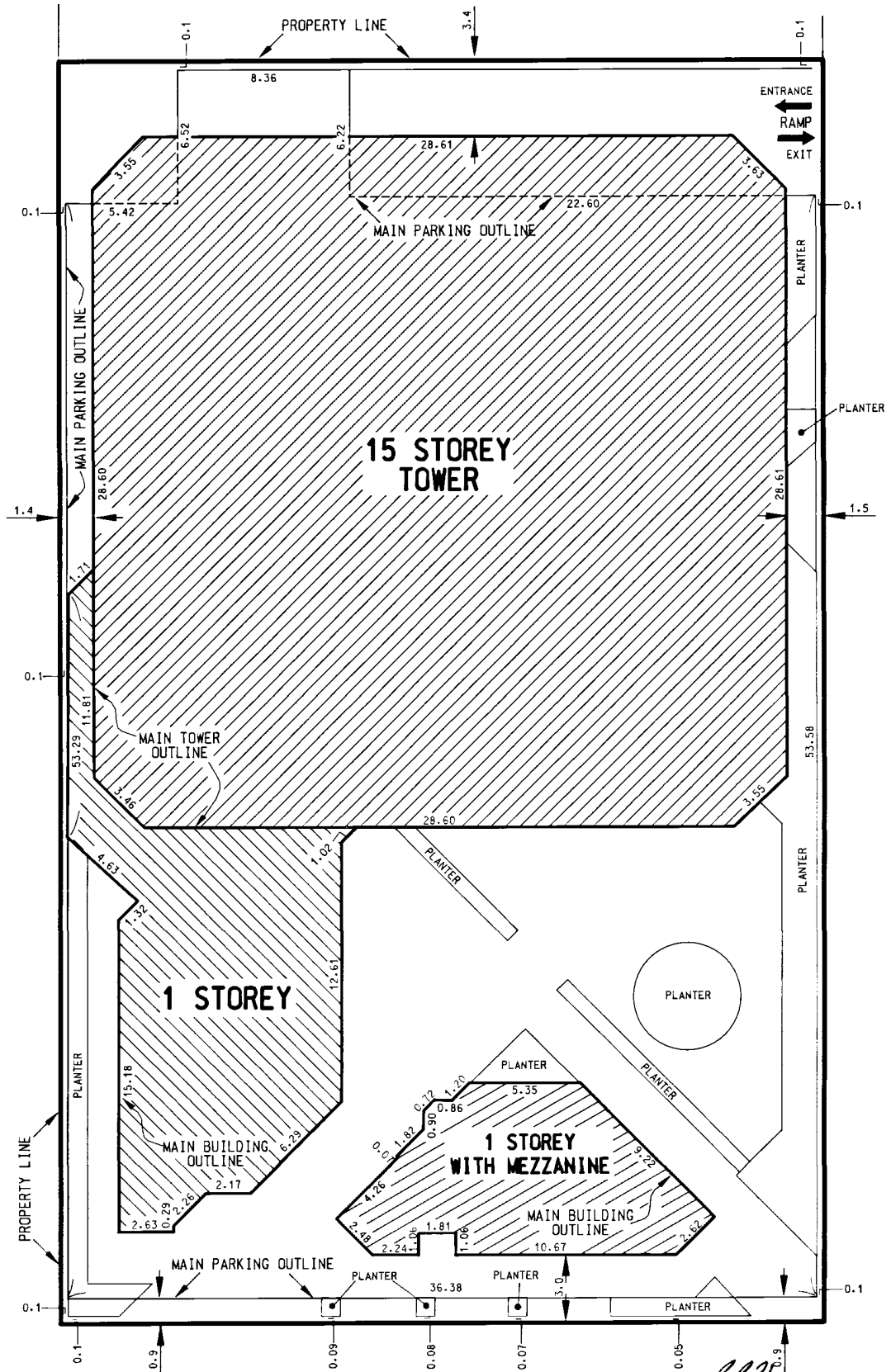
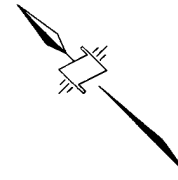
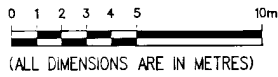
THIS PLAN LIES WITHIN THE GREATER VANCOUVER REGIONAL DISTRICT.

FILED LMS1757 U96683 2006-08-23-08:45:55:247477

BUILDING LOCATION AND DIMENSIONS

STRATA PLAN LMS 1757

SCALE 1:200



FILED LMS1757 U96683 2006-08-23-08:45:55:247477

CONDOMINIUM ACT

STRATA PLAN LMS 1757

LOT #	TYPE	SHEET #	FORM 1	FORM 2	FORM 3
			SCHEDULE OF UNIT ENTITLEMENT	SCHEDULE OF INTEREST UPON DESTRUCTION	SCHEDULE OF VOTING RIGHTS
			UNIT ENTITLEMENT	INTEREST UPON DESTRUCTION	NUMBER OF VOTES
1	RES	15	621	799	1
2	RES	15	656	914	1
3	RES	15	605	780	1
4	RES	15	583	698	1
5	RES	15	582	698	1
6	RES	15	656	818	1
7	RES	15	621	749	1
8	RES	15	621	761	1
9	RES	7,15	656	888	1
10	RES	7,15	582	749	1
11	RES	7,15	583	761	1
12	RES	7,15	605	768	1
13	RES	7,15	656	914	1
14	RES	17	621	850	1
15	RES	17	621	863	1
16	RES	17	656	926	1
17	RES	17	605	844	1
18	RES	17	583	755	1
19	RES	17	582	755	1
20	RES	17	656	831	1
21	RES	17	621	812	1
22	RES	17	621	825	1
23	RES	7,17	656	914	1
24	RES	7,17	582	812	1
25	RES	7,17	583	825	1
26	RES	7,17	605	831	1
27	RES	7,17	656	926	1
28	RES	17	621	863	1
29	RES	19	623	875	1
30	RES	19	656	936	1
31	RES	19	605	856	1
32	RES	19	583	774	1
33	RES	19	582	768	1
34	RES	19	656	850	1
35	RES	19	623	831	1
36	RES	19	623	844	1
37	RES	7,19	656	926	1
38	RES	7,19	583	825	1
39	RES	7,19	586	837	1
40	RES	7,19	606	844	1
41	RES	7,19	656	939	1
42	RES	19	623	875	1
43	RES	21	623	888	1
44	RES	21	656	945	1
45	RES	21	605	869	1
46	RES	21	583	787	1
47	RES	21	582	780	1
48	RES	21	656	869	1
49	RES	21	623	850	1
50	RES	21	623	863	1

CONDOMINIUM ACT

STRATA PLAN LMS 1757

LOT #	TYPE	SHEET #	FORM 1	FORM 2	FORM 3
			SCHEDULE OF UNIT ENTITLEMENT	SCHEDULE OF INTEREST UPON DESTRUCTION	SCHEDULE OF VOTING RIGHTS
			UNIT ENTITLEMENT	INTEREST UPON DESTRUCTION	NUMBER OF VOTES
51	RES	7,21	656	936	1
52	RES	7,21	582	837	1
53	RES	7,21	583	850	1
54	RES	7,21	605	856	1
55	RES	7,21	656	945	1
56	RES	21	623	888	1
57	RES	23	623	901	1
58	RES	23	656	952	1
59	RES	23	605	882	1
60	RES	23	583	799	1
61	RES	23	582	793	1
62	RES	23	656	888	1
63	RES	23	623	869	1
64	RES	23	623	882	1
65	RES	7,8,23	656	945	1
66	RES	7,8,23	582	850	1
67	RES	7,8,23	583	863	1
68	RES	7,8,23	605	869	1
69	RES	7,8,23	656	952	1
70	RES	23	623	901	1
71	RES	25	623	914	1
72	RES	25	656	964	1
73	RES	25	605	895	1
74	RES	25	583	812	1
75	RES	25	582	806	1
76	RES	25	656	907	1
77	RES	25	623	888	1
78	RES	25	623	901	1
79	RES	8,25	656	952	1
80	RES	8,25	582	869	1
81	RES	8,25	583	882	1
82	RES	8,25	605	882	1
83	RES	8,25	656	964	1
84	RES	25	623	914	1
85	RES	27	623	926	1
86	RES	27	656	977	1
87	RES	27	605	907	1
88	RES	27	583	850	1
89	RES	27	582	825	1
90	RES	27	656	926	1
91	RES	27	623	907	1
92	RES	27	623	907	1
93	RES	8,27	656	971	1
94	RES	8,27	582	882	1
95	RES	8,27	583	895	1
96	RES	8,27	605	895	1
97	RES	8,27	656	977	1
98	RES	27	623	926	1
99	RES	29	623	939	1
100	RES	29	656	990	1

CONDOMINIUM ACT

STRATA PLAN LMS 1757

LOT #	TYPE	SHEET #	FORM 1	FORM 2	FORM 3
			SCHEDULE OF UNIT ENTITLEMENT	SCHEDULE OF INTEREST UPON DESTRUCTION	SCHEDULE OF VOTING RIGHTS
			UNIT ENTITLEMENT	INTEREST UPON DESTRUCTION	NUMBER OF VOTES
101	RES	29	605	920	1
102	RES	29	583	863	1
103	RES	29	582	837	1
104	RES	29	656	945	1
105	RES	29	623	920	1
106	RES	29	623	920	1
107	RES	8,29	656	983	1
108	RES	8,29	582	895	1
109	RES	8,29	583	907	1
110	RES	8,29	605	907	1
111	RES	8,29	656	990	1
112	RES	29	623	939	1
113	RES	31	1 039	1 536	1
114	RES	31	1 000	1 333	1
115	RES	31	1 039	1 485	1
116	RES	31	957	1 371	1
117	RES	8,31	1 032	1 504	1
118	RES	8,31	1 000	1 383	1
119	RES	8,31	1 032	1 504	1
120	RES	31	957	1 402	1
121	RES	32	1 039	1 561	1
122	RES	32	1 000	1 422	1
123	RES	32	1 039	1 529	1
124	RES	32	957	1 396	1
125	RES	8,32	1 032	1 529	1
126	RES	8,32	1 000	1 409	1
127	RES	8,32	1 032	1 529	1
128	RES	32	957	1 428	1
129	RES	33	1 039	1 587	1
130	RES	33	1 000	1 447	1
131	RES	33	1 039	1 555	1
132	RES	33	957	1 422	1
133	RES	8,33	1 032	1 555	1
134	RES	8,33	1 000	1 434	1
135	RES	8,33	1 032	1 555	1
136	RES	33	957	1 453	1
137	RES	34	1 012	1 841	1
138	RES	34	922	1 695	1
139	RES	8,34	566	983	1
140	RES	8,34	931	1 777	1
141	RES	14	751	933	1
142	RES	14	550	583	1
143	COM	7,13,14	3 626	2 889	5.25
144	COM	7,13,14	1 356	2 254	1.96
145	COM	13	390	634	0.56
146	COM	13	270	533	0.39
147	COM	13	662	888	0.96
148	COM	13	724	952	1.05
149	COM	13	987	1 015	1.43
AGGREGATE			106 152	150 000	153.60

NOTE:

S.L.'s 1 to 142 INCLUSIVE ARE FOR RESIDENTIAL USE
 S.L.'s 143 to 149 INCLUSIVE ARE FOR COMMERCIAL USE

STRATA PLAN LMS 1757

ACCEPTED AS TO FORMS 1, 2, AND 3
THIS 29 DAY OF November 1994

M. Wong
SUPERINTENDENT OF REAL ESTATE

OWNER:

LONDON PLACE SUITES LTD.
(INCORPORATION No. 463819)
BY ITS AUTHORIZED SIGNATORY(S)

Robert Glass
ROBERT GLASS

WITNESS:

Robert D. J. Brown
NAME ROBERT D. J. BROWN
1001-601 West Broadway
Vancouver, B.C. V6Z 4C2
ADDRESS
lawyer
OCCUPATION

MORTGAGEE:

CANADIAN IMPERIAL BANK OF COMMERCE
BY ITS AUTHORIZED SIGNATORY(S)

Christopher Kalmer
Vice President
James Keegan
Account Manager

Elizabeth A. Wingate
NAME Elizabeth A. Wingate
16th Floor, 1100 Burrard St
Vancouver, BC V6Z 1A6
ADDRESS Banker
OCCUPATION

FORM 10; CERTIFICATE OF APPROVAL

I HEREBY CERTIFY THAT THE CONSTRUCTION
OF THE BUILDING SITUATED ON LOT E,
BLOCK 90, DISTRICT LOT 541, PLAN 13782,
HAS BEEN APPROVED FOR STRATA DEVELOPMENT.

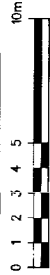
THIS 19TH DAY OF DECEMBER, 1994.

Rick Scobie
CITY APPROVING OFFICER FOR THE
CITY OF VANCOUVER
RICK SCOBIE

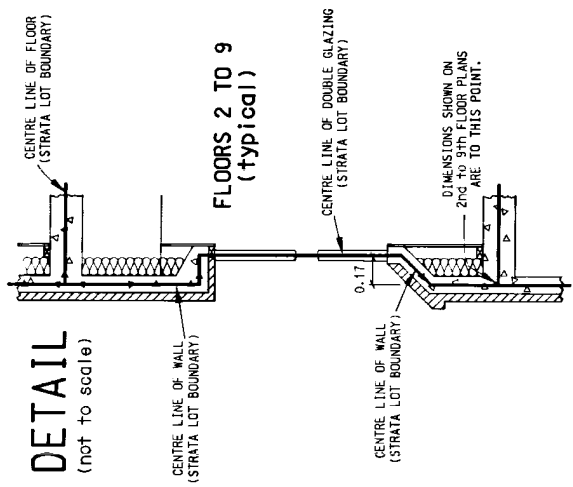
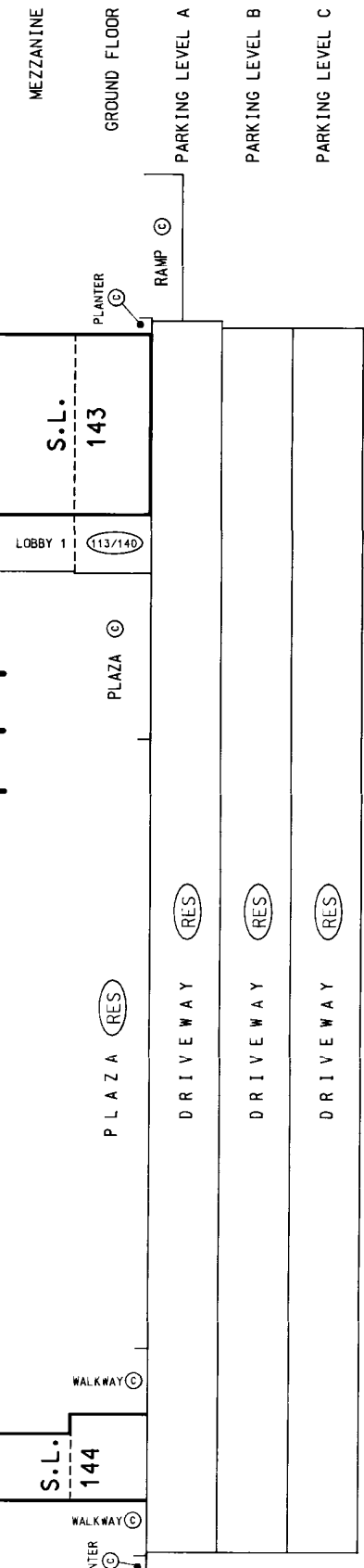
FILED LMS1757 U96683 2006-08-23-08:45:55:247477

SECTION A - A'

LOWER 1/2
SCALE 1:200



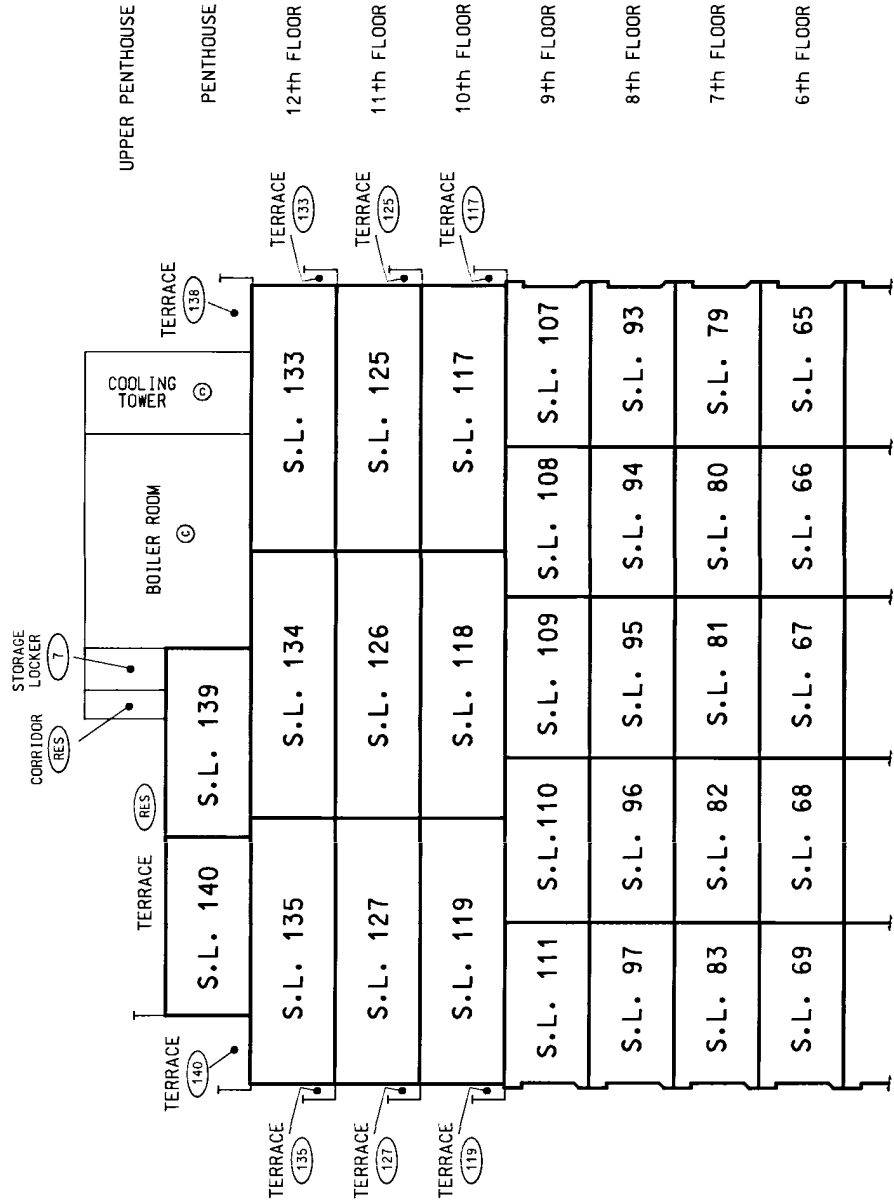
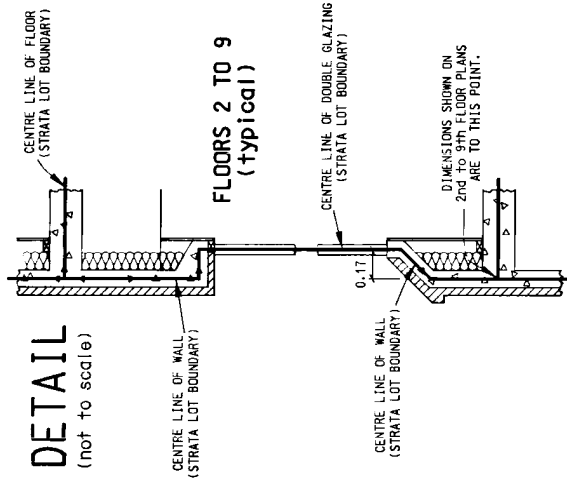
S.L. 69	S.L. 68	S.L. 67	S.L. 66	S.L. 65	6th FLOOR
S.L. 55	S.L. 54	S.L. 53	S.L. 52	S.L. 51	5th FLOOR
S.L. 41	S.L. 40	S.L. 39	S.L. 38	S.L. 37	4th FLOOR
S.L. 27	S.L. 26	S.L. 25	S.L. 24	S.L. 23	3rd FLOOR
S.L. 13	S.L. 12	S.L. 11	S.L. 10	S.L. 9	2nd FLOOR



STRATA PLAN LMS 1757

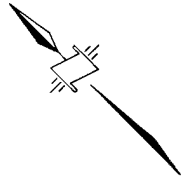
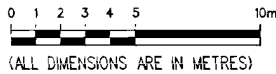
SECTION A - A'
UPPER 1/2

SCALE 1:200



PARKING LEVEL C

SCALE 1:200



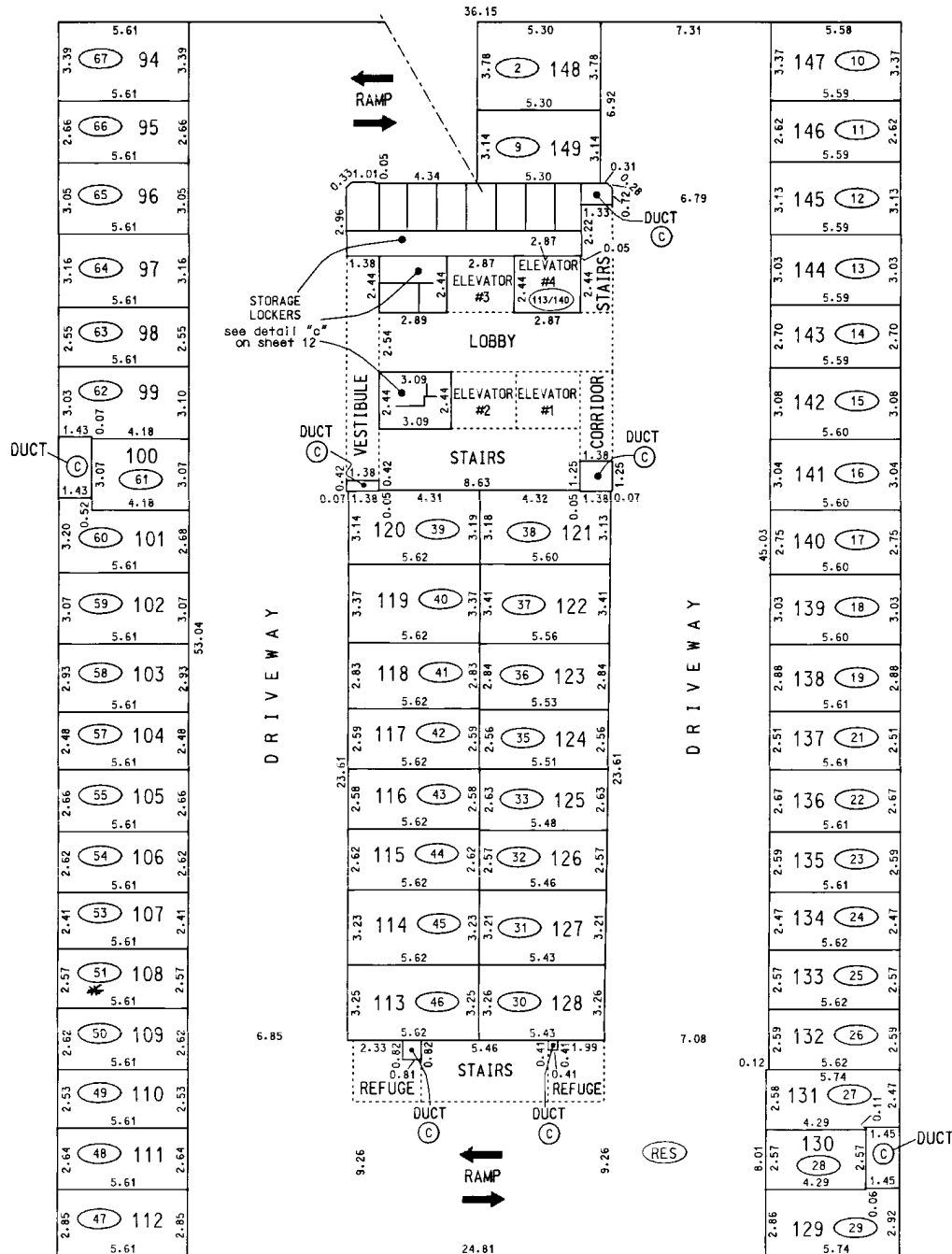
STRATA PLAN LMS 1757

LEGEND

- 147 (typical) DENOTES PARKING STALL NUMBER
- 10 (typical) DENOTES LIMITED COMMON PROPERTY FOR THE EXCLUSIVE USE OF STRATA LOT 10

AMENDED PURSUANT TO SECTION 57(1)(C) CONDOMINIUM ACT SEE AMENDED SHEET 9 OF 41 SHEETS AND UNANIMOUS RESOLUTION BK 138385 DATE: 1996/05/08

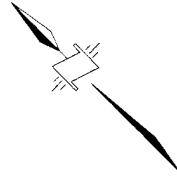
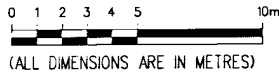
Sandy King
 ASSISTANT DEPUTY REGISTRAR.



PARKING LEVEL C

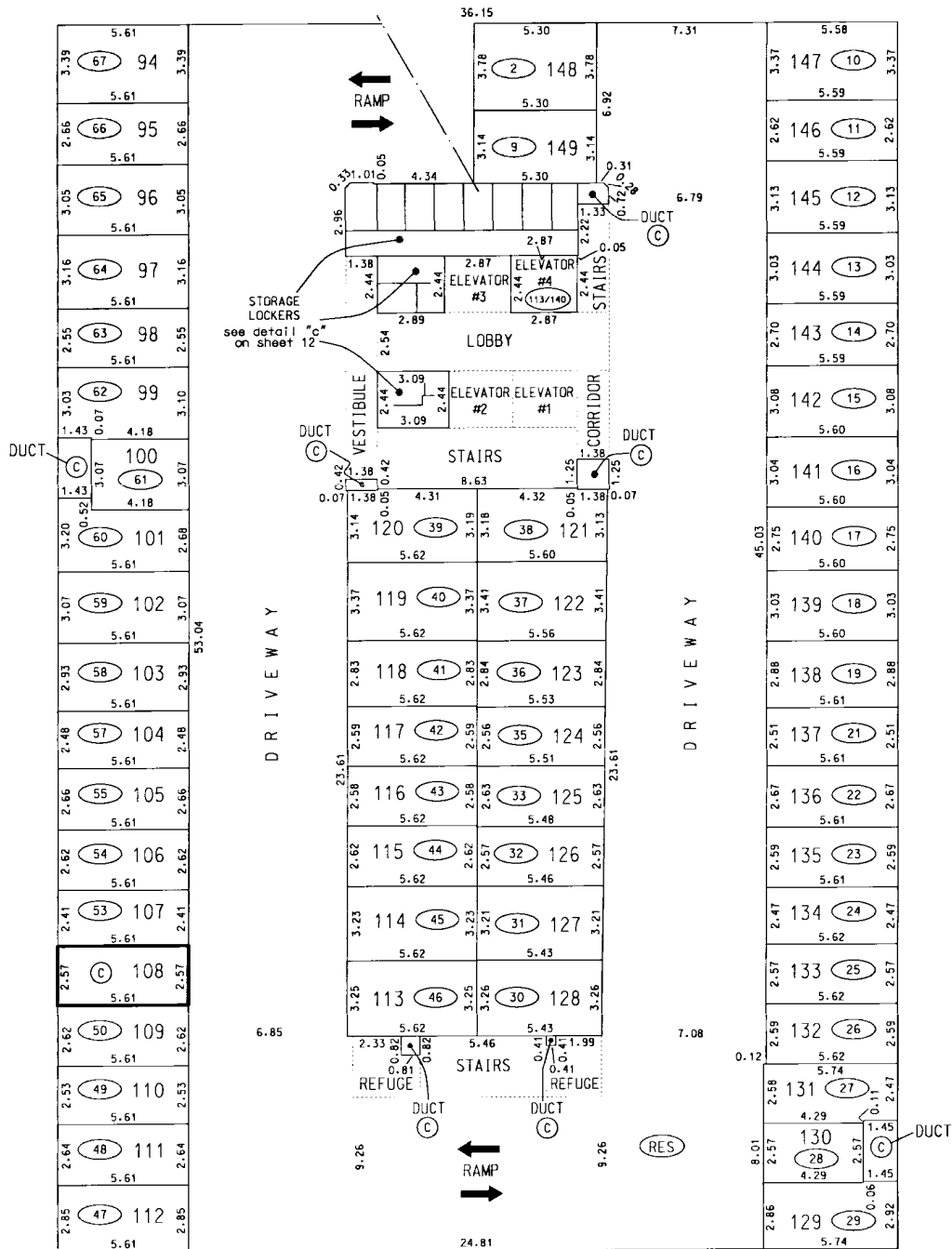
STRATA PLAN LMS 1757

SCALE 1:200



LEGEND

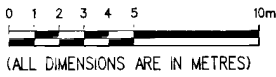
- 147 (typical) DENOTES PARKING STALL NUMBER
- (10) (typical) DENOTES LIMITED COMMON PROPERTY FOR THE EXCLUSIVE USE OF STRATA LOT 10
- (C) DENOTES COMMON PROPERTY



96 - 04 - 24
FILE 2112 05741-7

PARKING LEVEL B

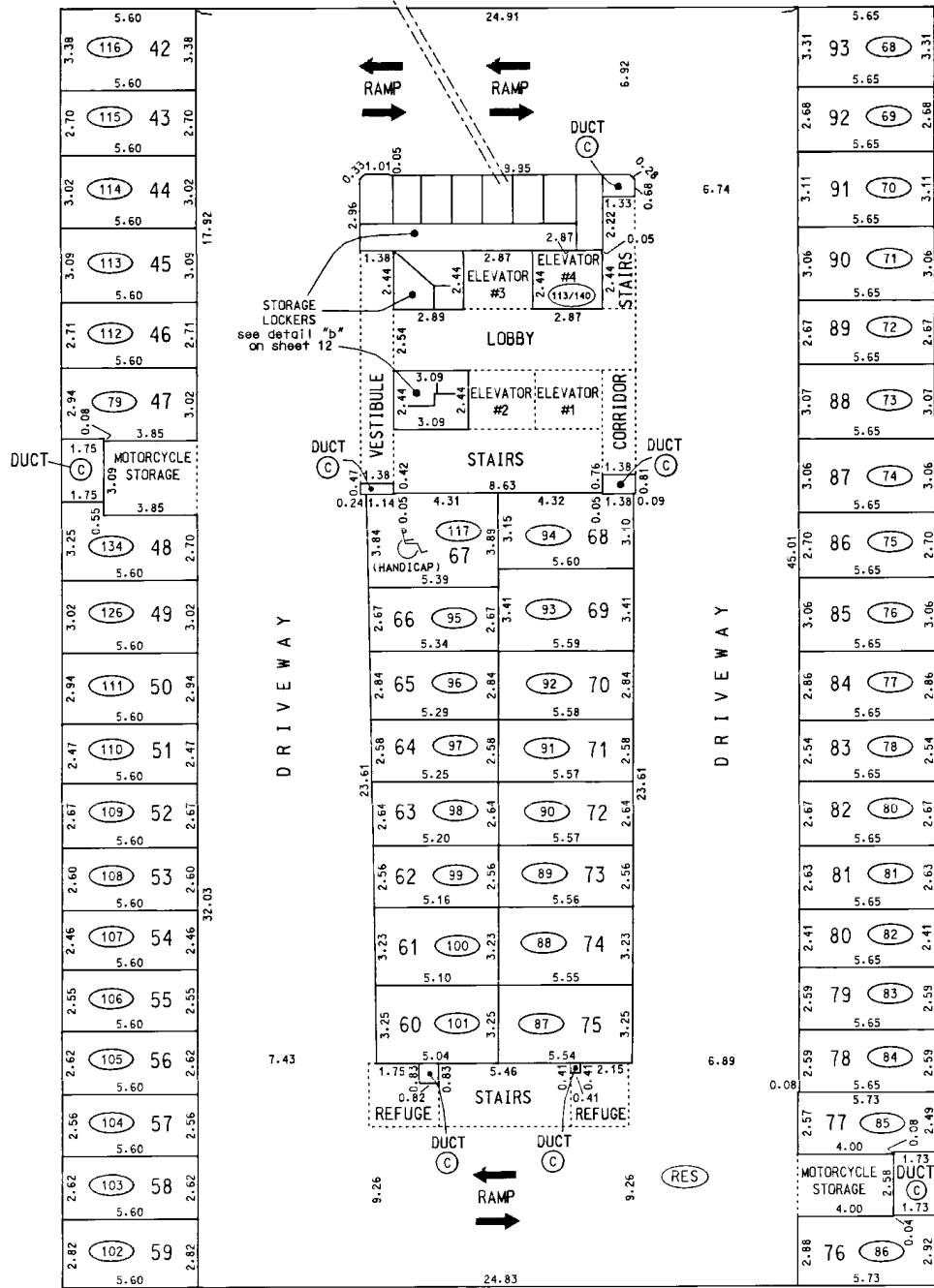
SCALE 1:200



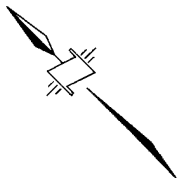
STRATA PLAN LMS 1757

LEGEND

- 93 (typical) DENOTES PARKING STALL NUMBER
- 68 (typical) DENOTES LIMITED COMMON PROPERTY FOR THE EXCLUSIVE USE OF STRATA LOT 68



94 - 11 - 25
 FILE 502 05741-6 (REV.1)

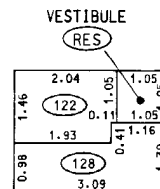
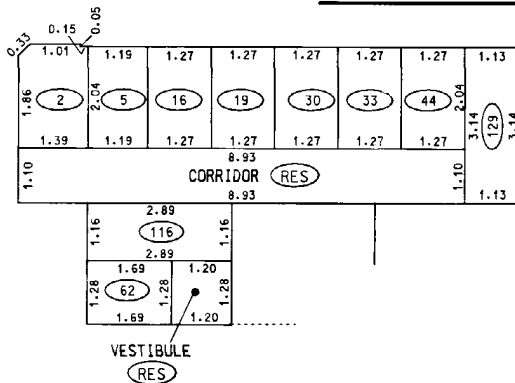


STORAGE LOCKERS DETAIL

SCALE 1:100

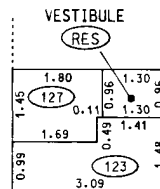
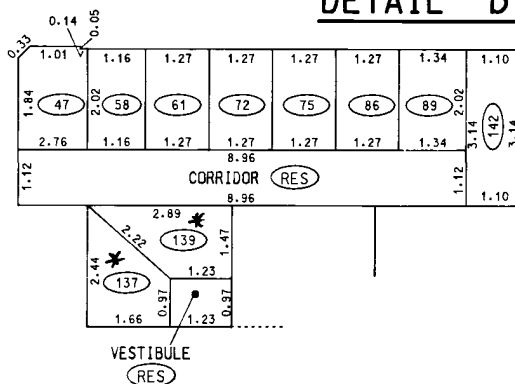
DETAIL "c"

PARKING LEVEL C



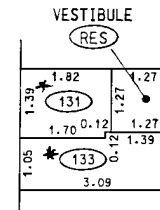
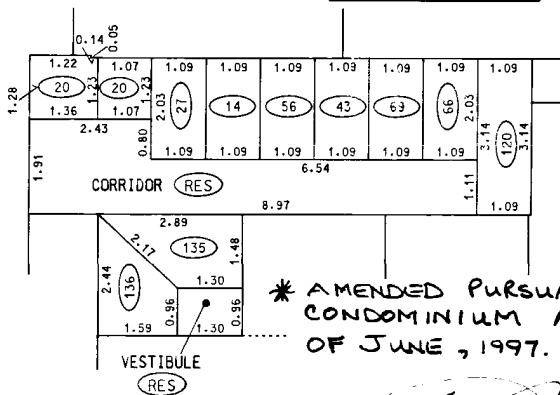
DETAIL "b"

PARKING LEVEL B



DETAIL "a"

PARKING LEVEL A



* AMENDED PURSUANT TO SEC. 57(1)(C) CONDOMINIUM ACT. THIS 4TH DAY OF JUNE, 1997.

[Signature]
 DEPUTY REGISTRAR
 (SEE AMENDED SHEET 12A - BL197363)

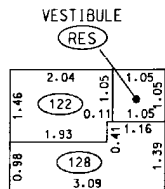
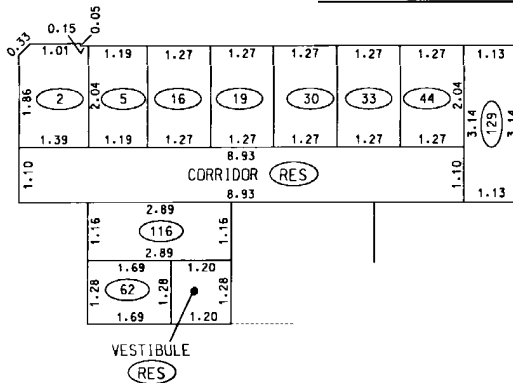
STRATA PLAN LMS 1757

STORAGE LOCKERS DETAIL

SCALE 1:100

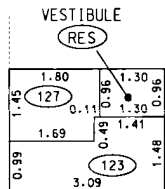
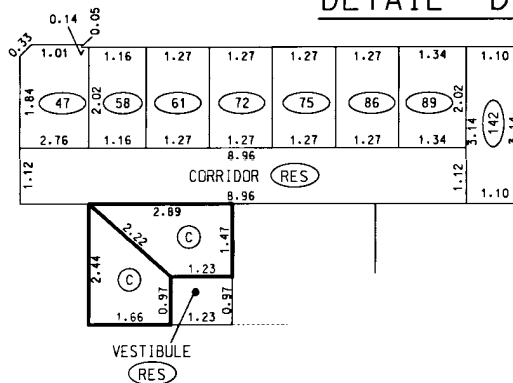
DETAIL "c"

PARKING LEVEL C



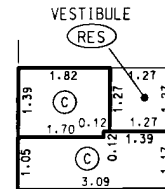
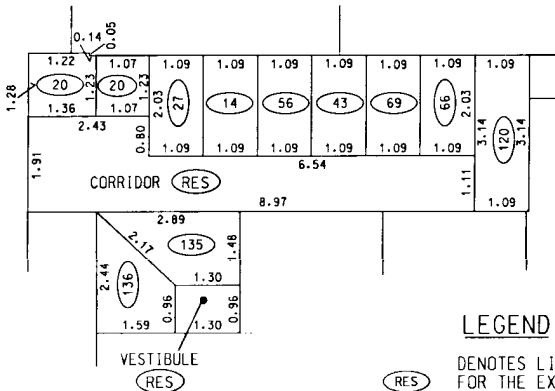
DETAIL "b"

PARKING LEVEL B



DETAIL "a"

PARKING LEVEL A



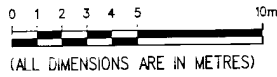
LEGEND

- (RES) DENOTES LIMITED COMMON PROPERTY FOR THE EXCLUSIVE USE OF RESIDENTIAL STRATA LOTS
- (2) DENOTES LIMITED COMMON PROPERTY FOR THE EXCLUSIVE USE OF STRATA LOT 2 (typical)
- (C) DENOTES COMMON PROPERTY

GROUND FLOOR

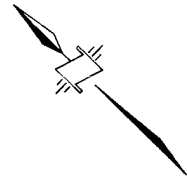
STRATA PLAN LMS 1757

SCALE 1:200

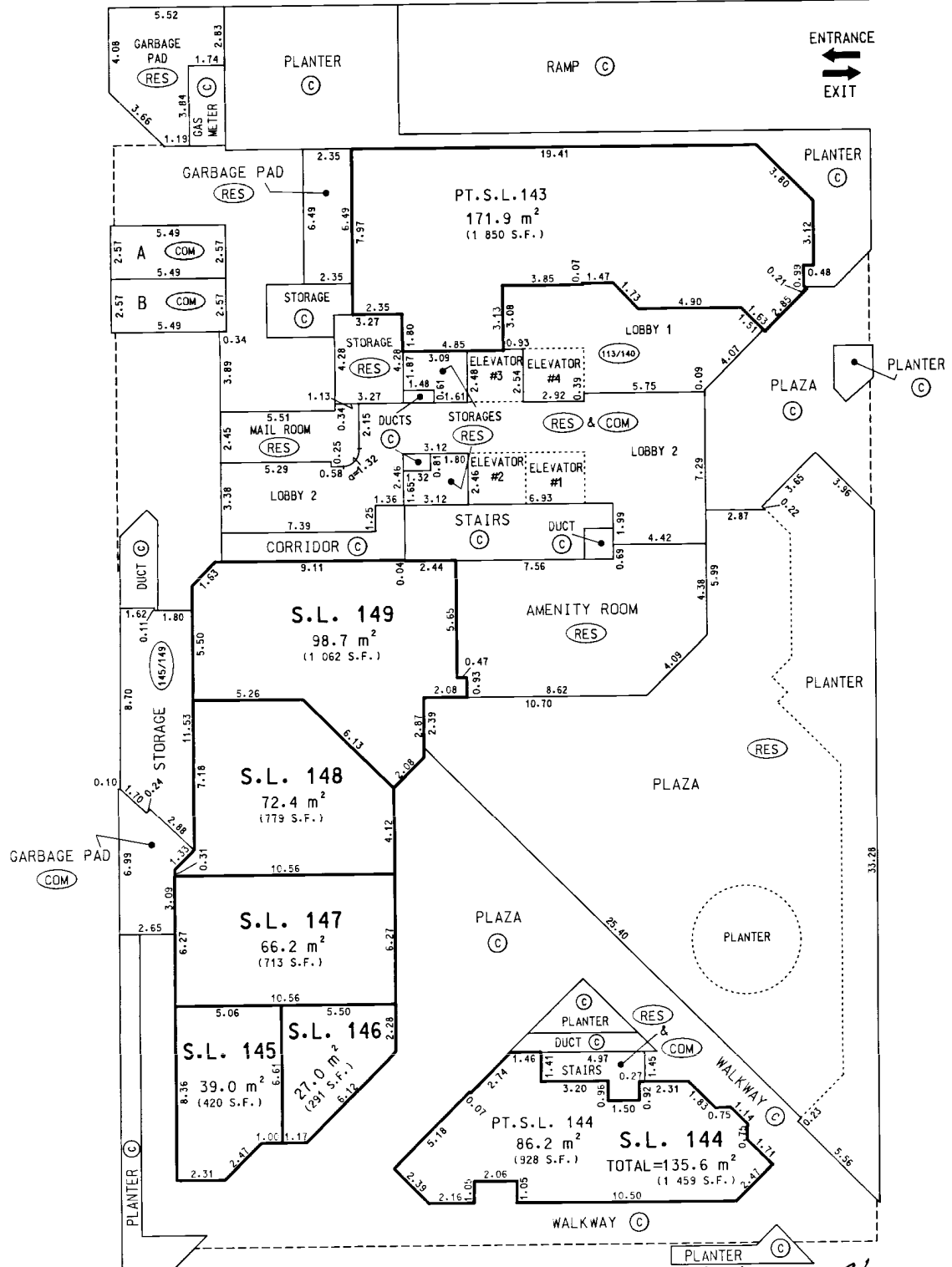


LEGEND

A (typical) DENOTES PARKING STALL DESIGNATION



A ←



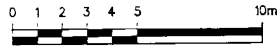
PLANTER (C)
 94 - 11 - 25
 FILE 502 05741-6 (REV.1)

FILED LMS1757 U96683 2006-08-23-08:45:55:247477

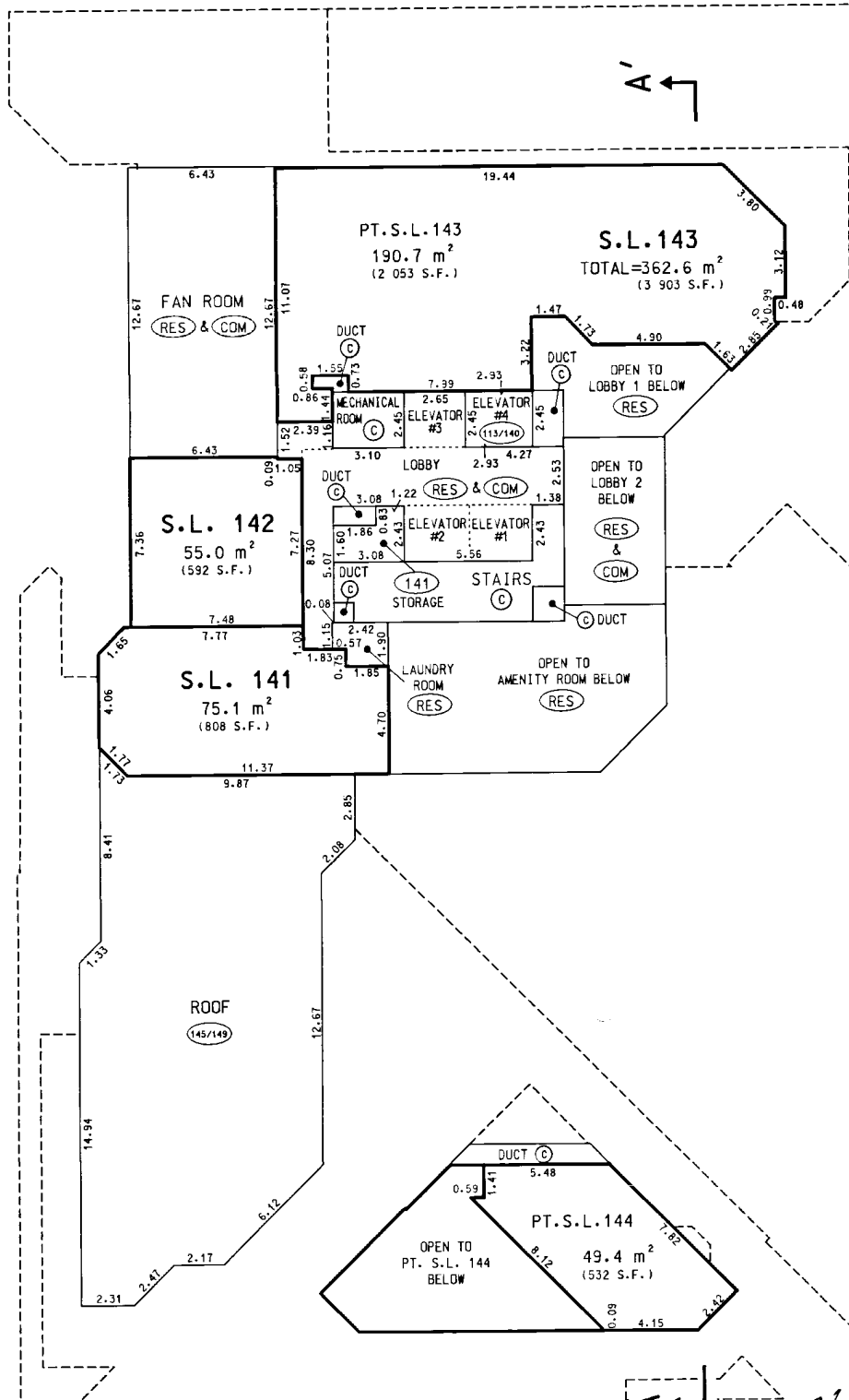
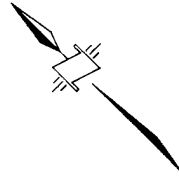
MEZZANINE

STRATA PLAN LMS 1757

SCALE 1:200



(ALL DIMENSIONS ARE IN METRES)

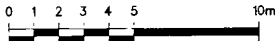


94 - 11 - 25
 FILE 502 05741-6 (REV.1)

STRATA PLAN LMS 1757

2nd FLOOR

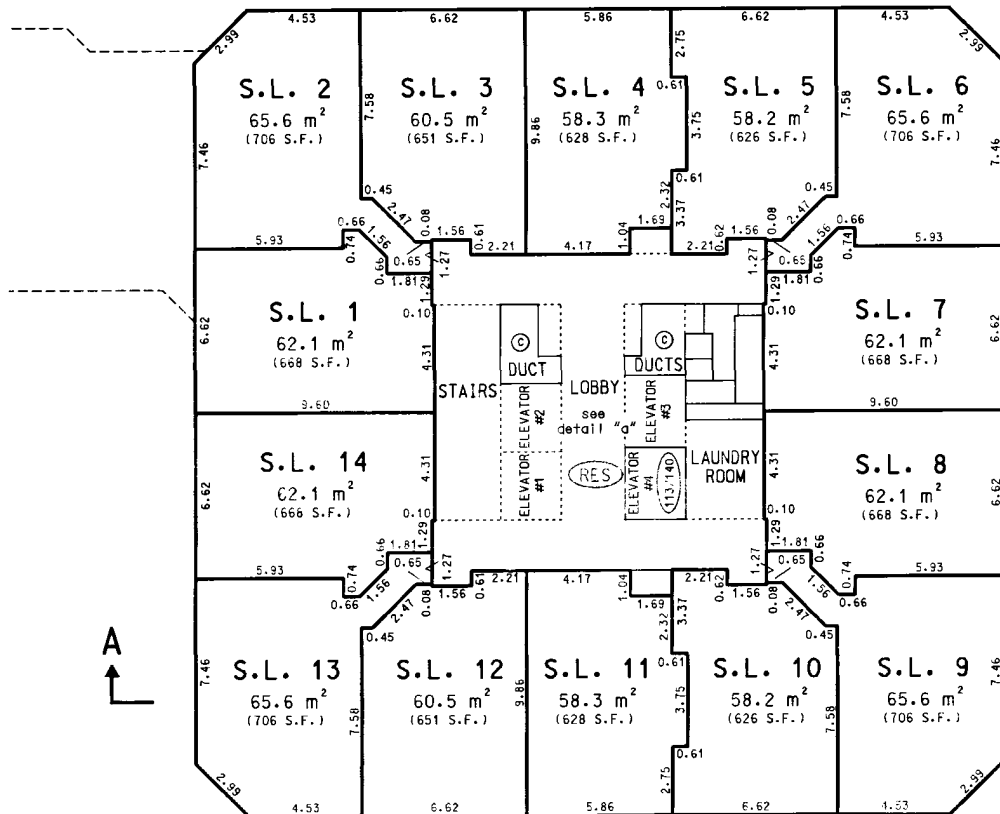
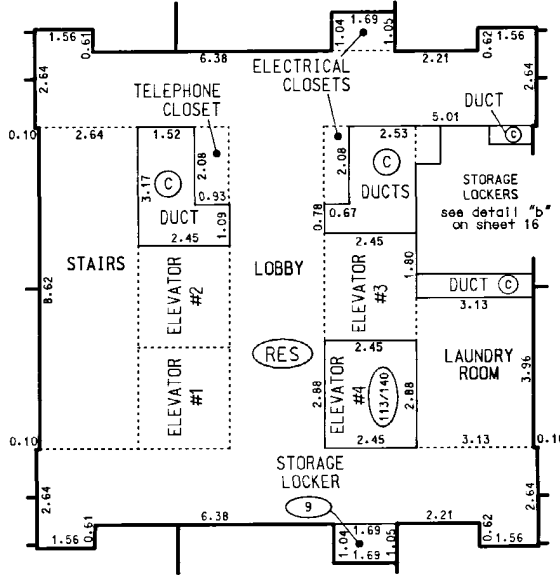
SCALE 1:200



(ALL DIMENSIONS ARE IN METRES)

DETAIL "a"

(not to scale)



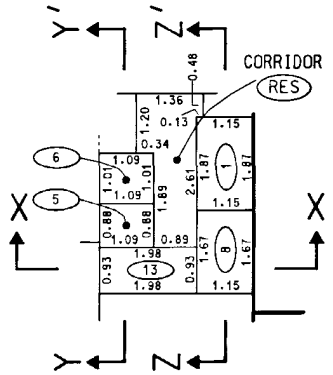
2nd FLOOR

STRATA PLAN LMS 1757

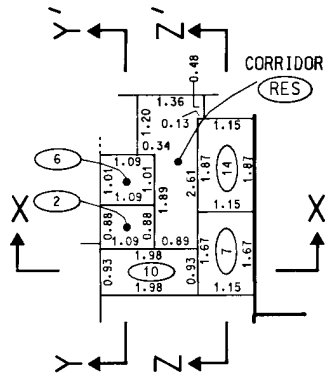
STORAGE LOCKERS DETAIL "b"

SCALE 1:100

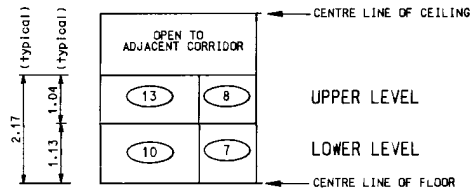
UPPER LEVEL



LOWER LEVEL



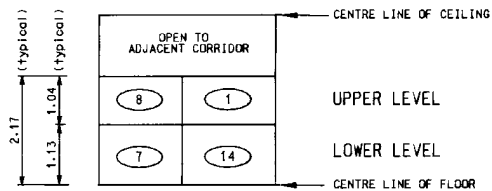
SECTION X - X'



SECTION Y - Y'



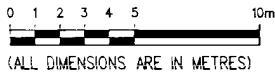
SECTION Z - Z'



3rd FLOOR

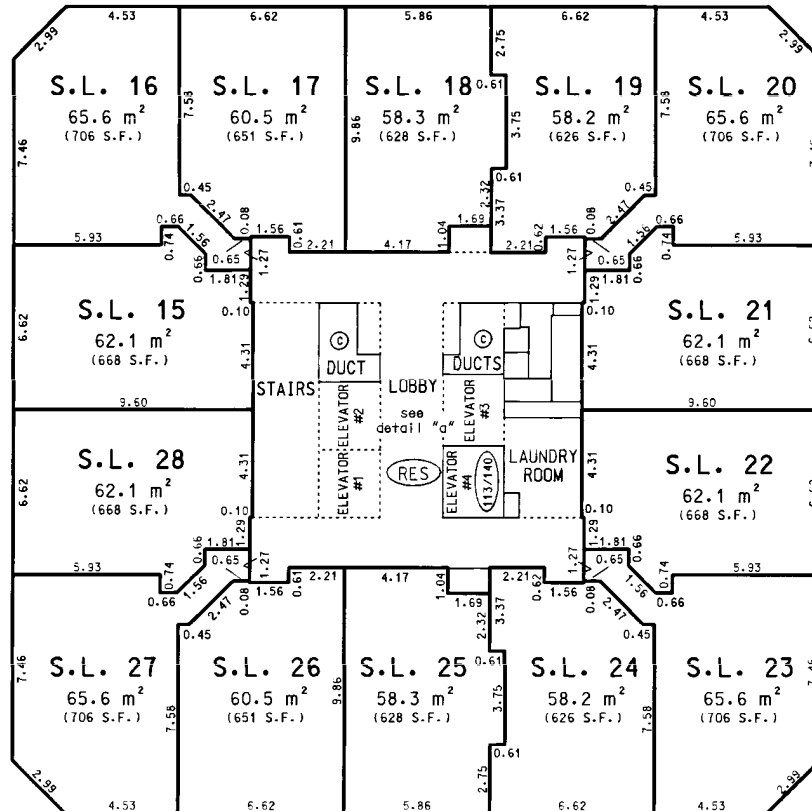
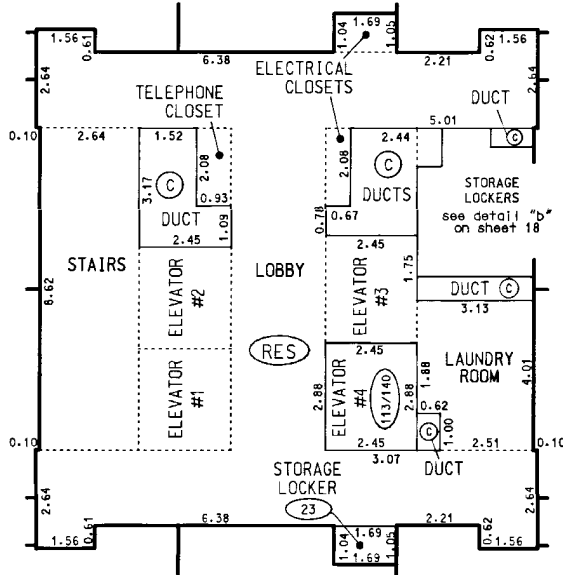
STRATA PLAN LMS 1757

SCALE 1:200



DETAIL "a"

(not to scale)



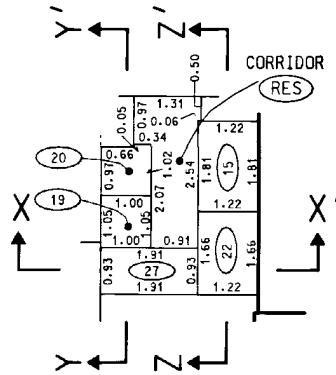
3rd FLOOR

STRATA PLAN LMS 1757

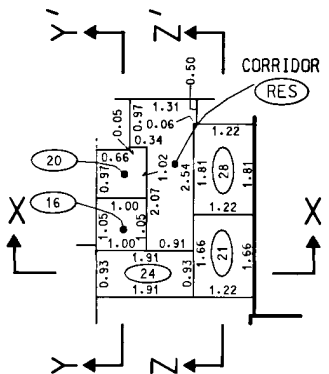
STORAGE LOCKERS DETAIL "b"

SCALE 1:100

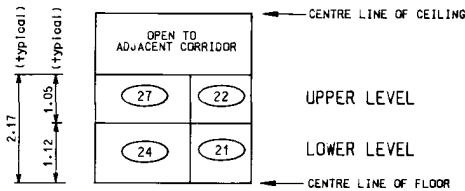
UPPER LEVEL



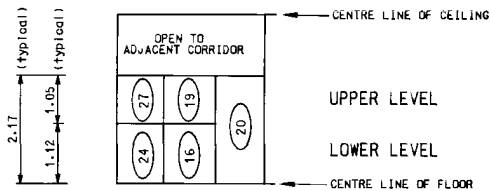
LOWER LEVEL



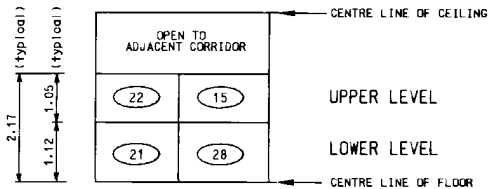
SECTION X - X'



SECTION Y - Y'



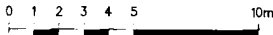
SECTION Z - Z'



4th FLOOR

STRATA PLAN LMS 1757

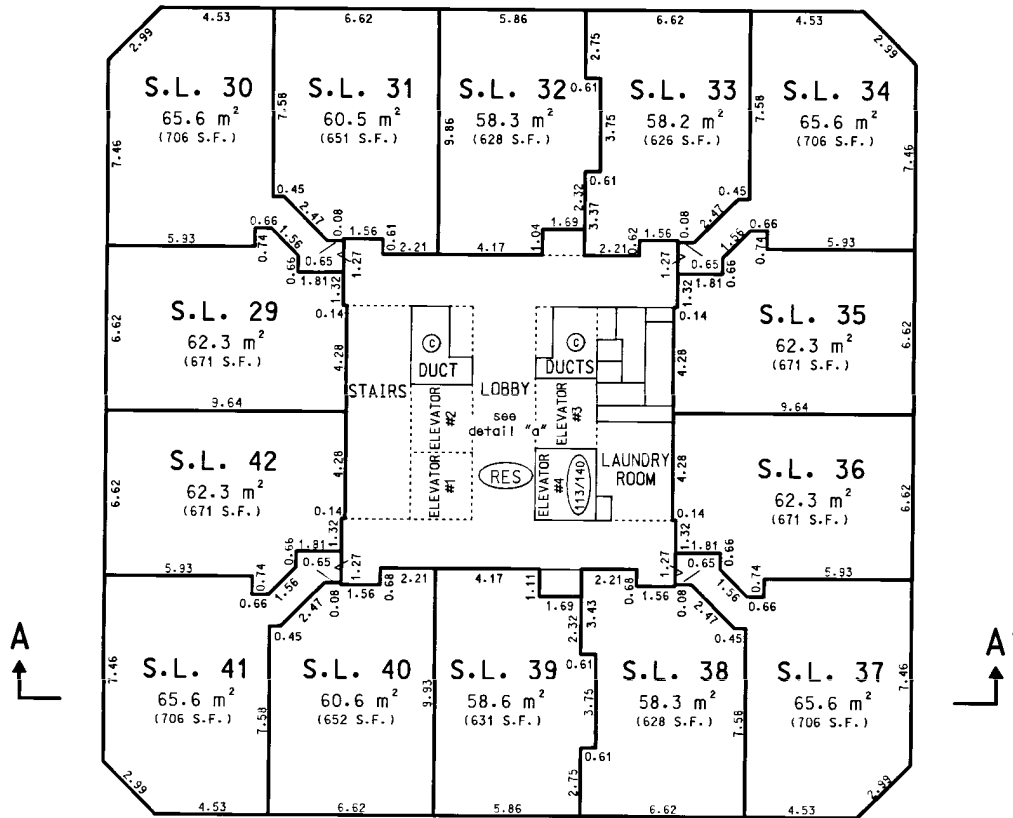
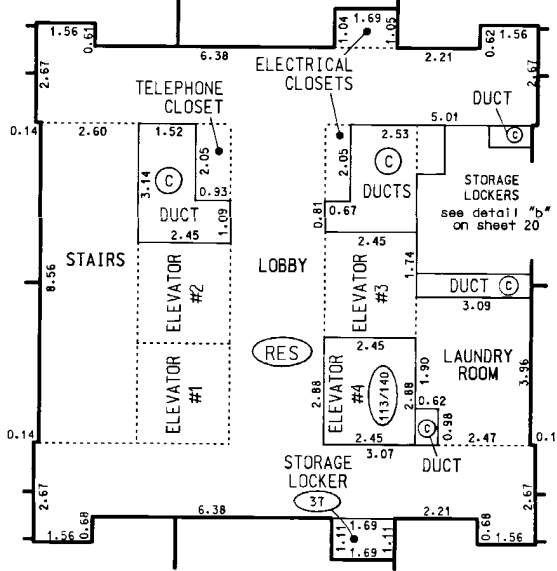
SCALE 1:200



(ALL DIMENSIONS ARE IN METRES)

DETAIL "a"

(not to scale)



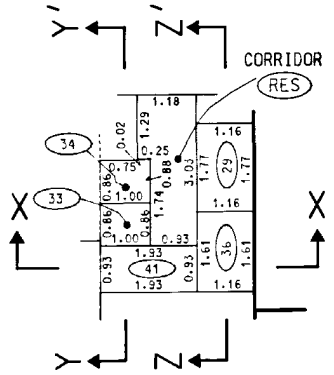
4th FLOOR

STRATA PLAN LMS 1757

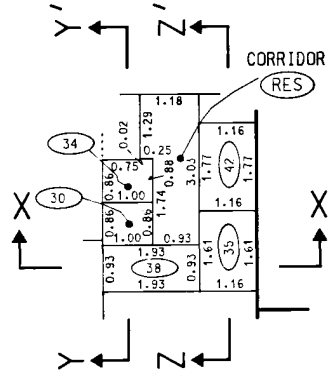
STORAGE LOCKERS DETAIL "b"

SCALE 1:100

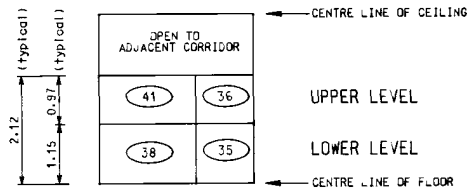
UPPER LEVEL



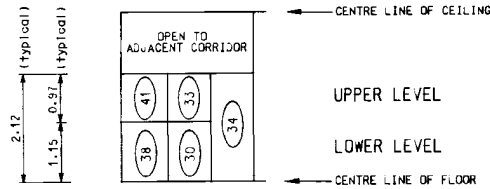
LOWER LEVEL



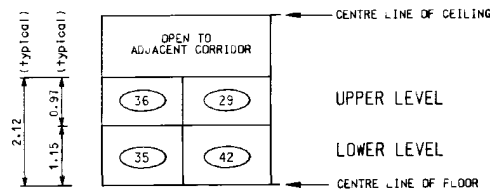
SECTION X - X'



SECTION Y - Y'



SECTION Z - Z'



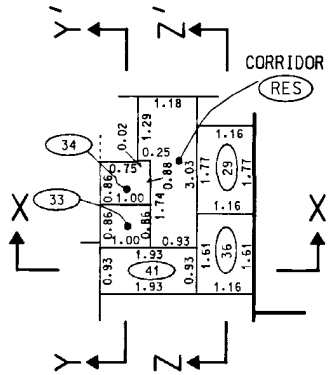
4th FLOOR

STRATA PLAN LMS 1757

STORAGE LOCKERS DETAIL "b"

SCALE 1:100

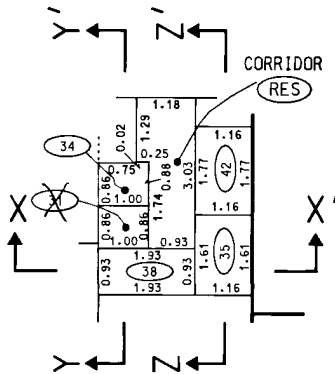
UPPER LEVEL



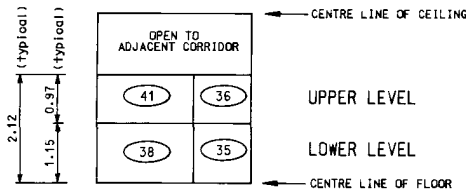
CORRECTED THIS 15TH DAY OF SEPTEMBER, 1995

[Signature]
 DEPUTY REGISTRAR
 B5 277670
 (SEE ATTENDOB SHEET 20)

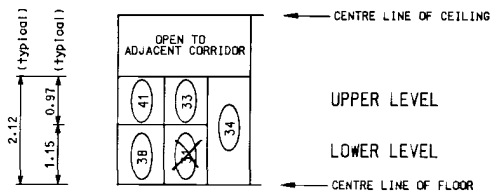
LOWER LEVEL



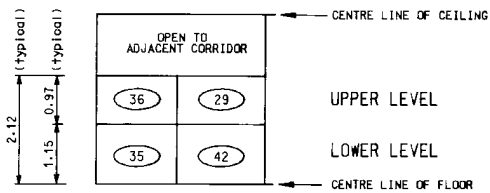
SECTION X - X'



SECTION Y - Y'



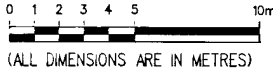
SECTION Z - Z'



5th FLOOR

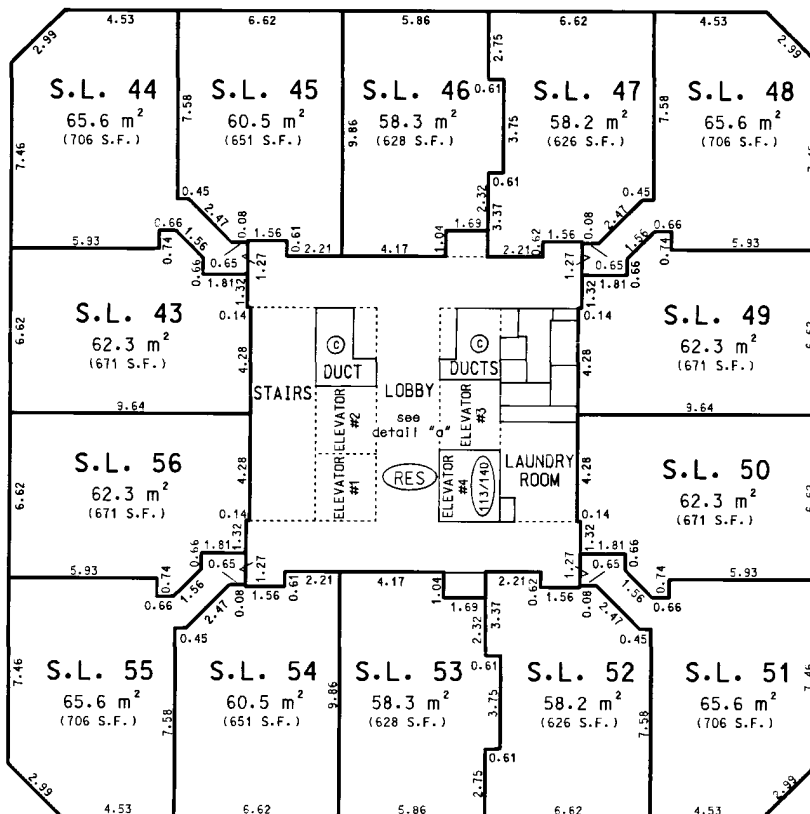
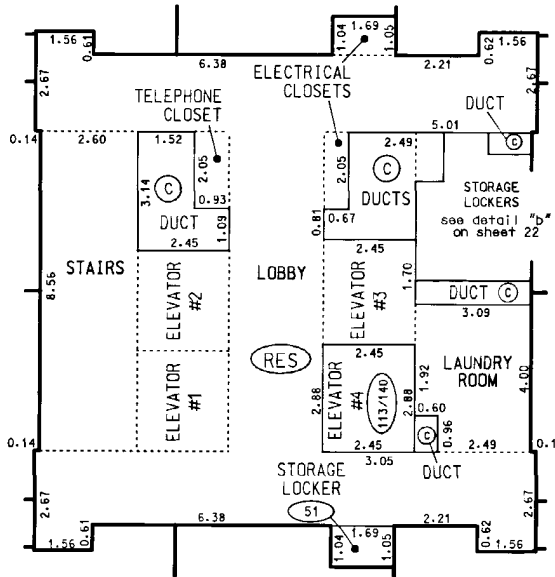
STRATA PLAN LMS 1757

SCALE 1:200



DETAIL "a"

(not to scale)



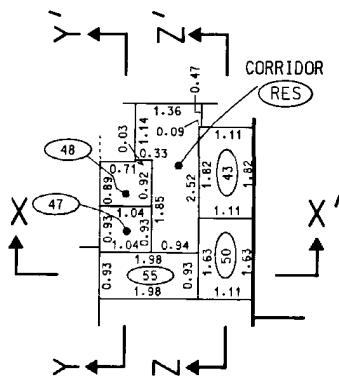
5th FLOOR

STRATA PLAN LMS 1757

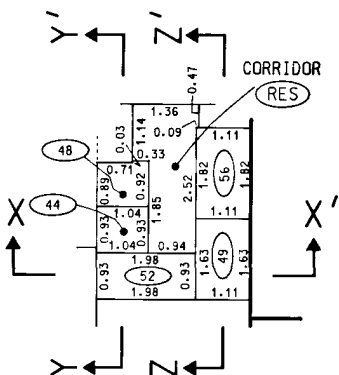
STORAGE LOCKERS DETAIL "b"

SCALE 1:100

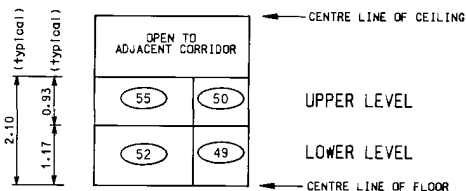
UPPER LEVEL



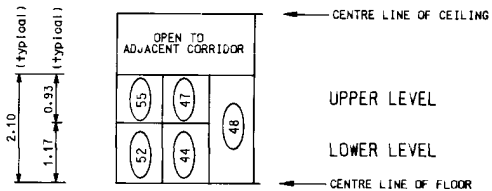
LOWER LEVEL



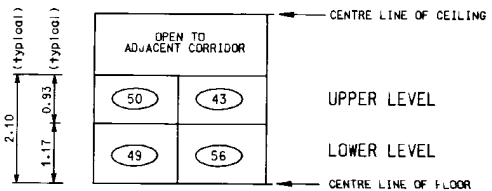
SECTION X - X'



SECTION Y - Y'



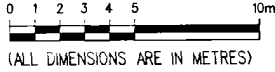
SECTION Z - Z'



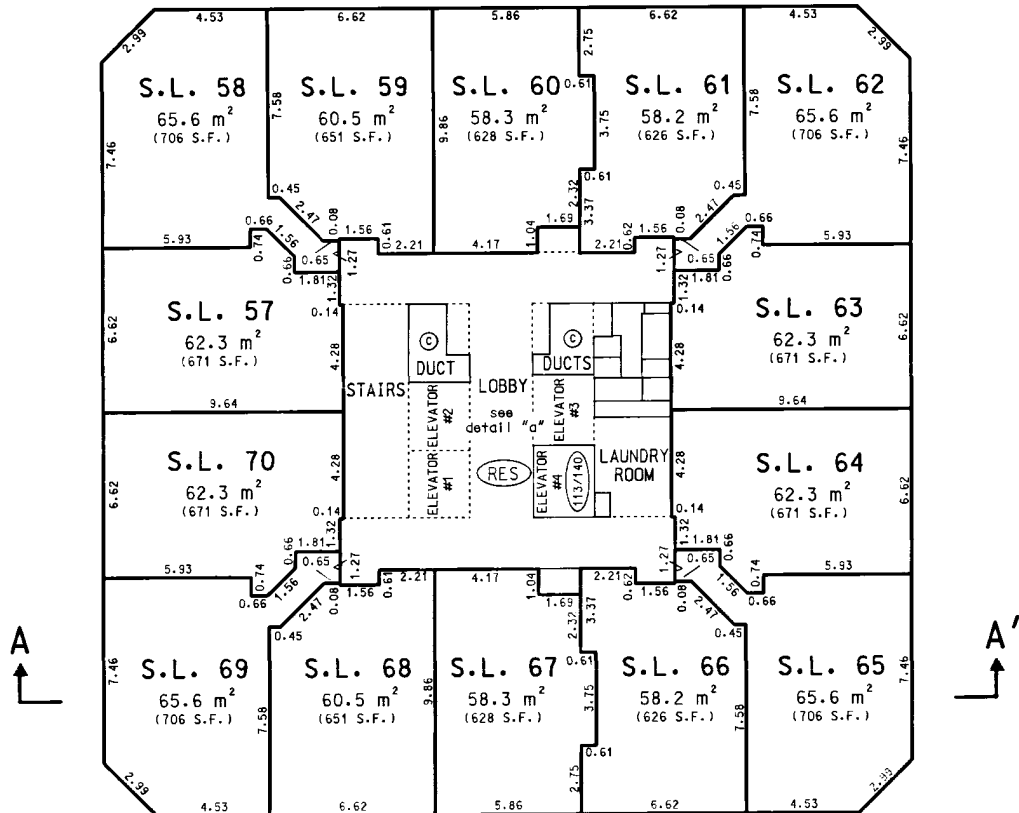
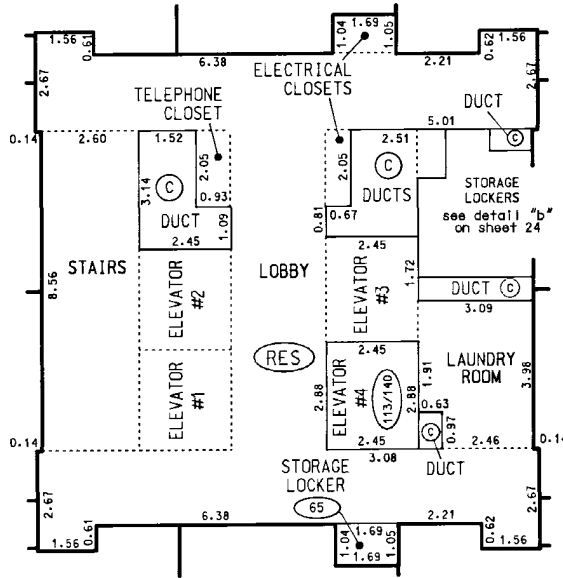
6th FLOOR

STRATA PLAN LMS 1757

SCALE 1:200

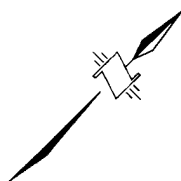


DETAIL "a" (not to scale)



6th FLOOR

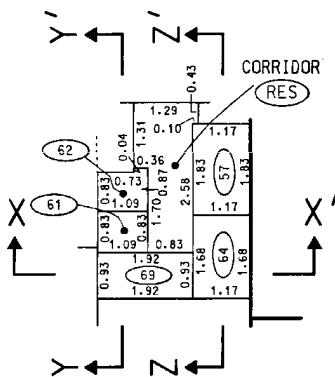
STRATA PLAN LMS 1757



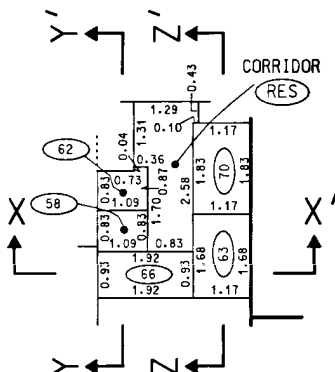
STORAGE LOCKERS DETAIL "b"

SCALE 1:100

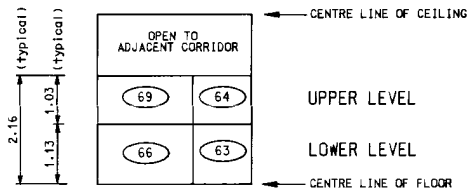
UPPER LEVEL



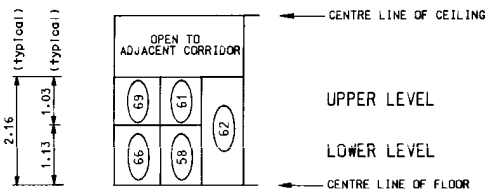
LOWER LEVEL



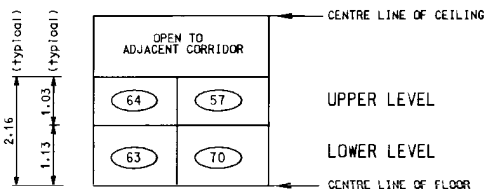
SECTION X - X'



SECTION Y - Y'



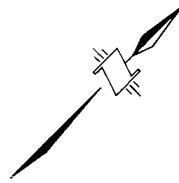
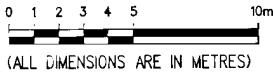
SECTION Z - Z'



FILED LMS1757 U96683 2006-08-23-08:45:55:247477

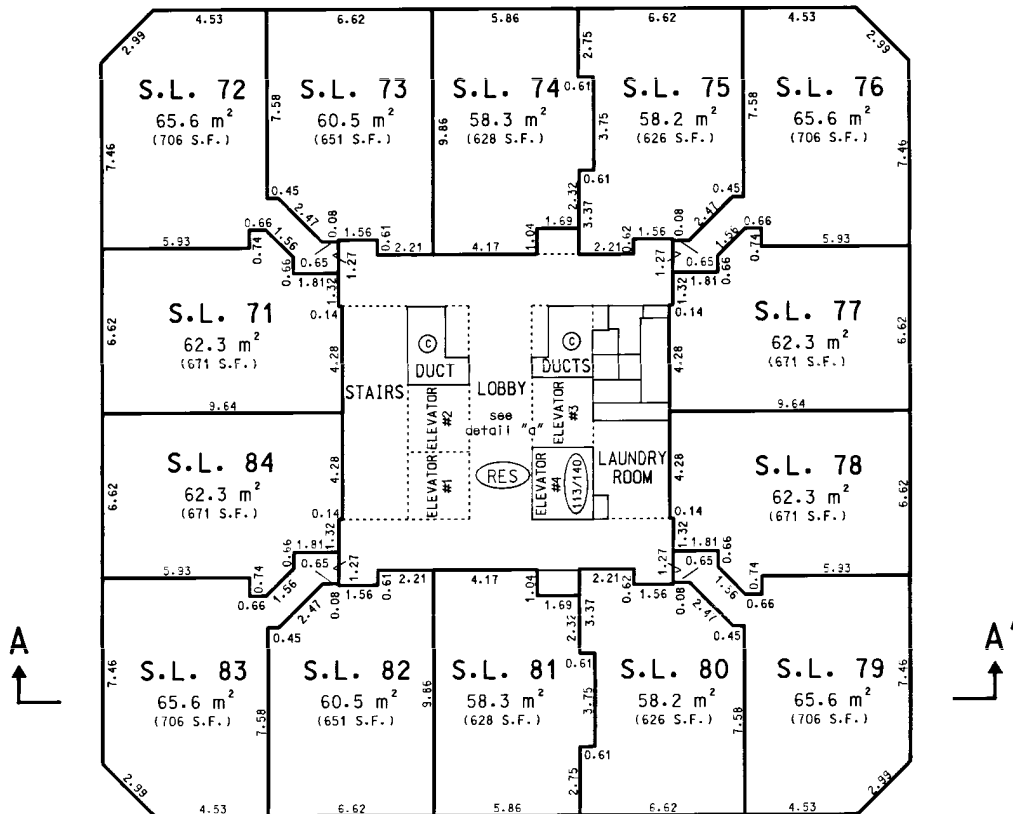
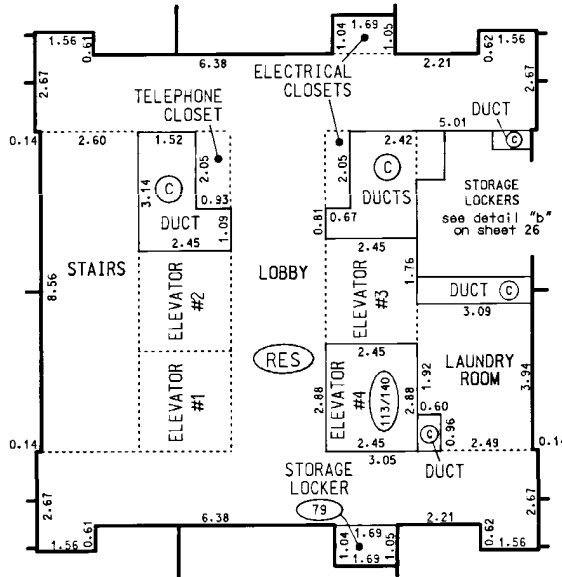
7th FLOOR

SCALE 1:200



DETAIL "a"

(not to scale)



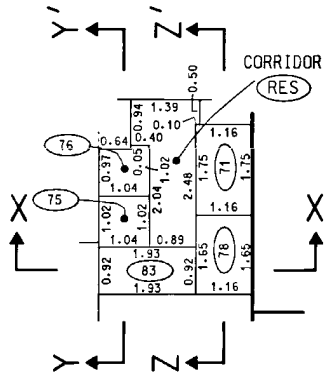
7th FLOOR

STRATA PLAN LMS 1757

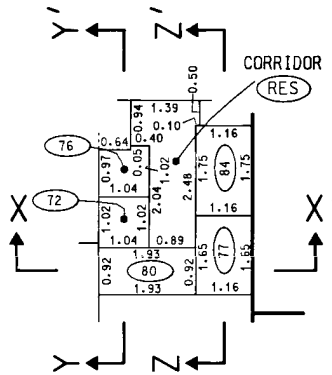
STORAGE LOCKERS DETAIL "b"

SCALE 1:100

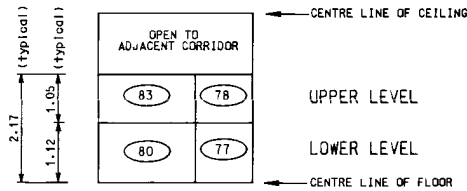
UPPER LEVEL



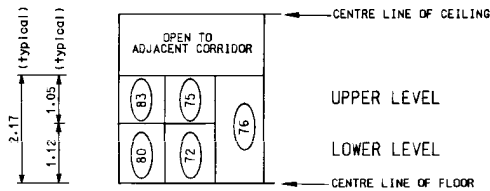
LOWER LEVEL



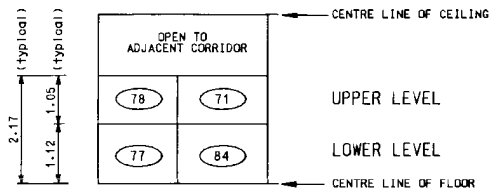
SECTION X - X'



SECTION Y - Y'



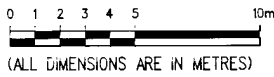
SECTION Z - Z'



8th FLOOR

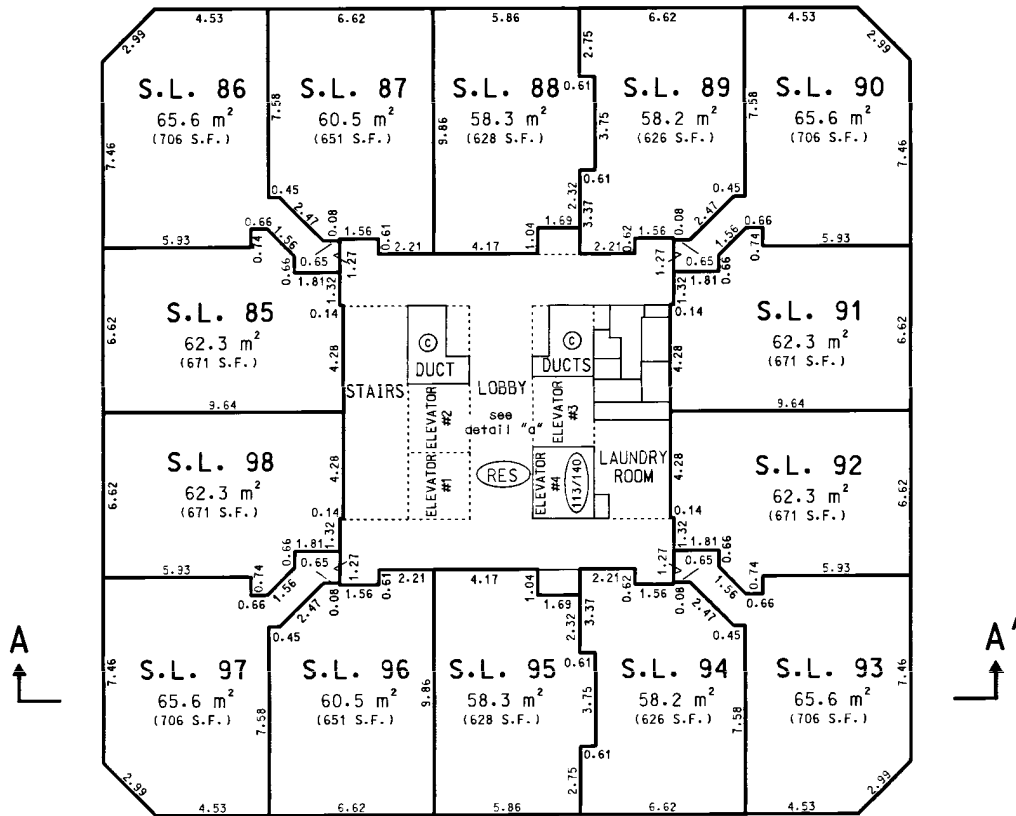
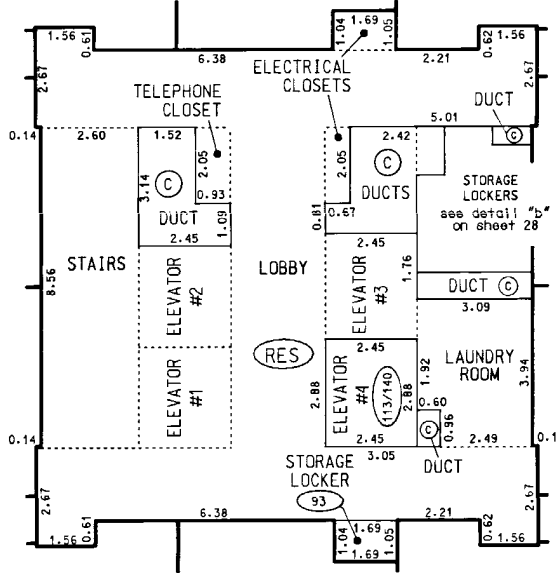
STRATA PLAN LMS 1757

SCALE 1:200



DETAIL "a"

(not to scale)



FILED
 LMS1757
 U96683
 2006-08-23-08:45:55:247477

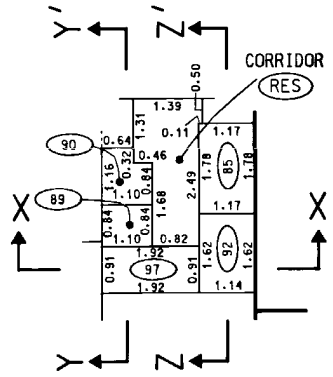
8th FLOOR

STRATA PLAN LMS 1757

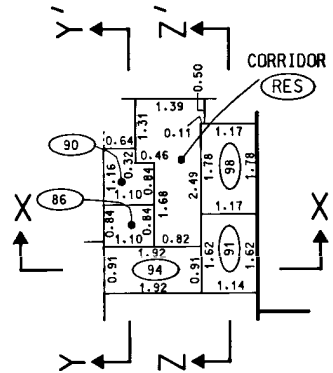
STORAGE LOCKERS DETAIL "b"

SCALE 1:100

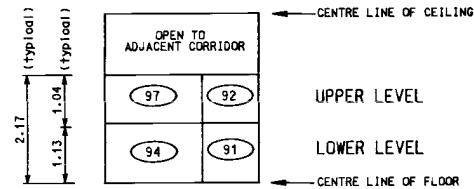
UPPER LEVEL



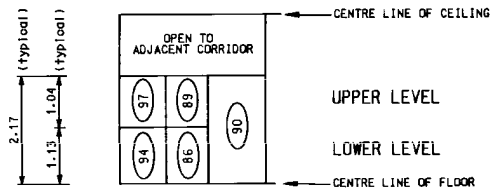
LOWER LEVEL



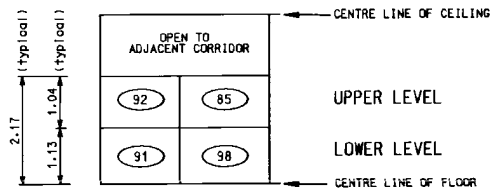
SECTION X - X'



SECTION Y - Y'



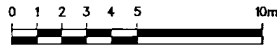
SECTION Z - Z'



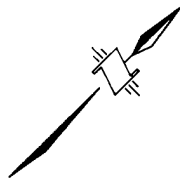
9th FLOOR

STRATA PLAN LMS 1757

SCALE 1:200

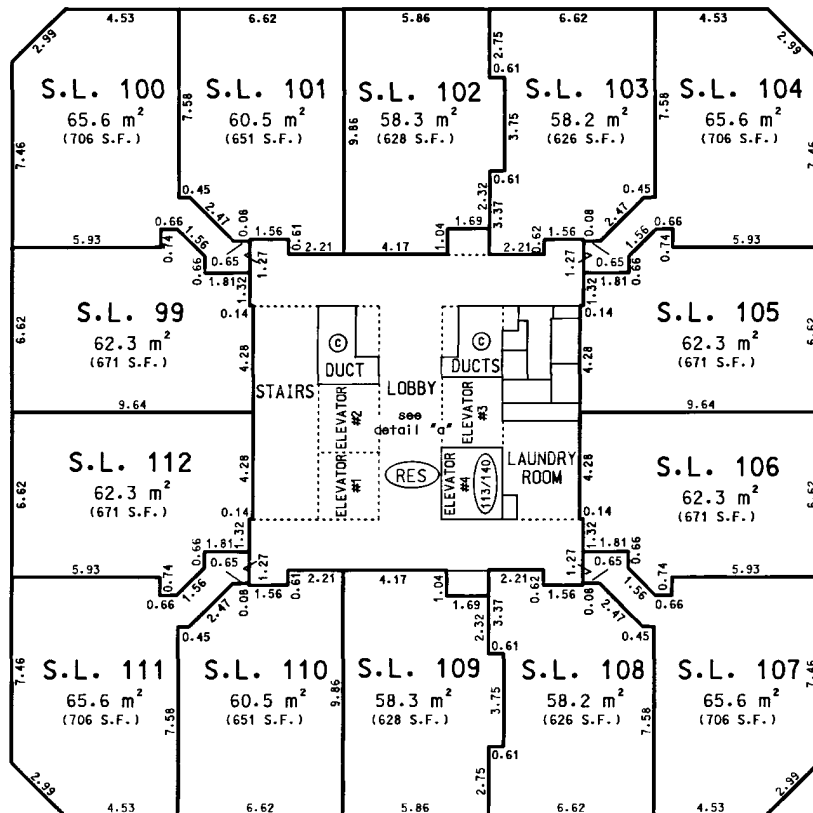
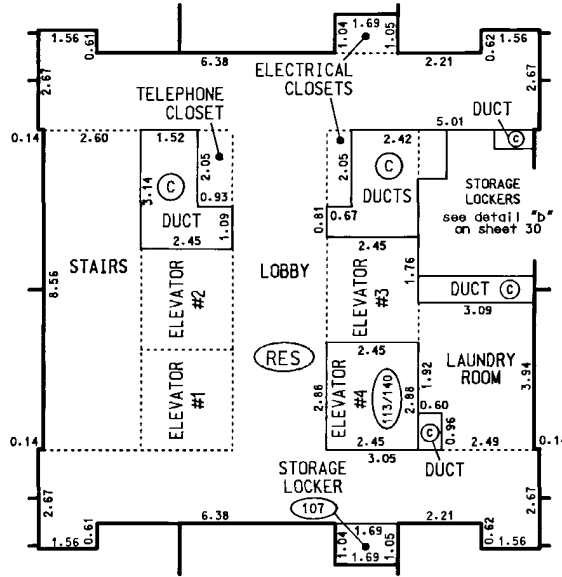


(ALL DIMENSIONS ARE IN METRES)



DETAIL "a"

(not to scale)

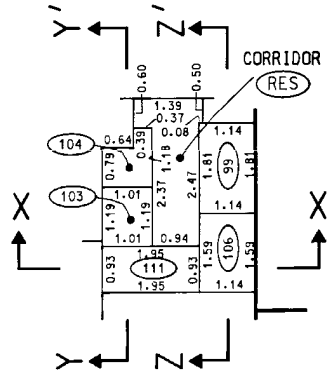


9th FLOOR

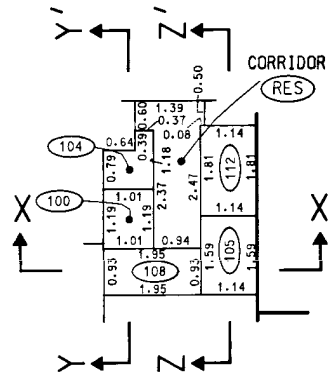
STORAGE LOCKERS DETAIL "b"

SCALE 1:100

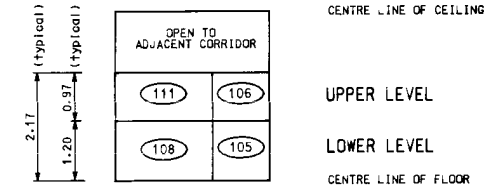
UPPER LEVEL



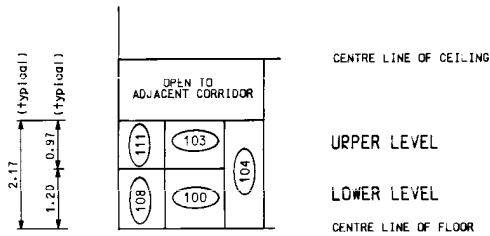
LOWER LEVEL



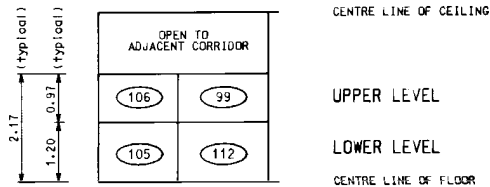
SECTION X - X'



SECTION Y - Y'



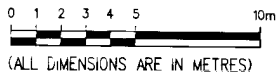
SECTION Z - Z'



10th FLOOR

STRATA PLAN LMS 1757

SCALE 1:200

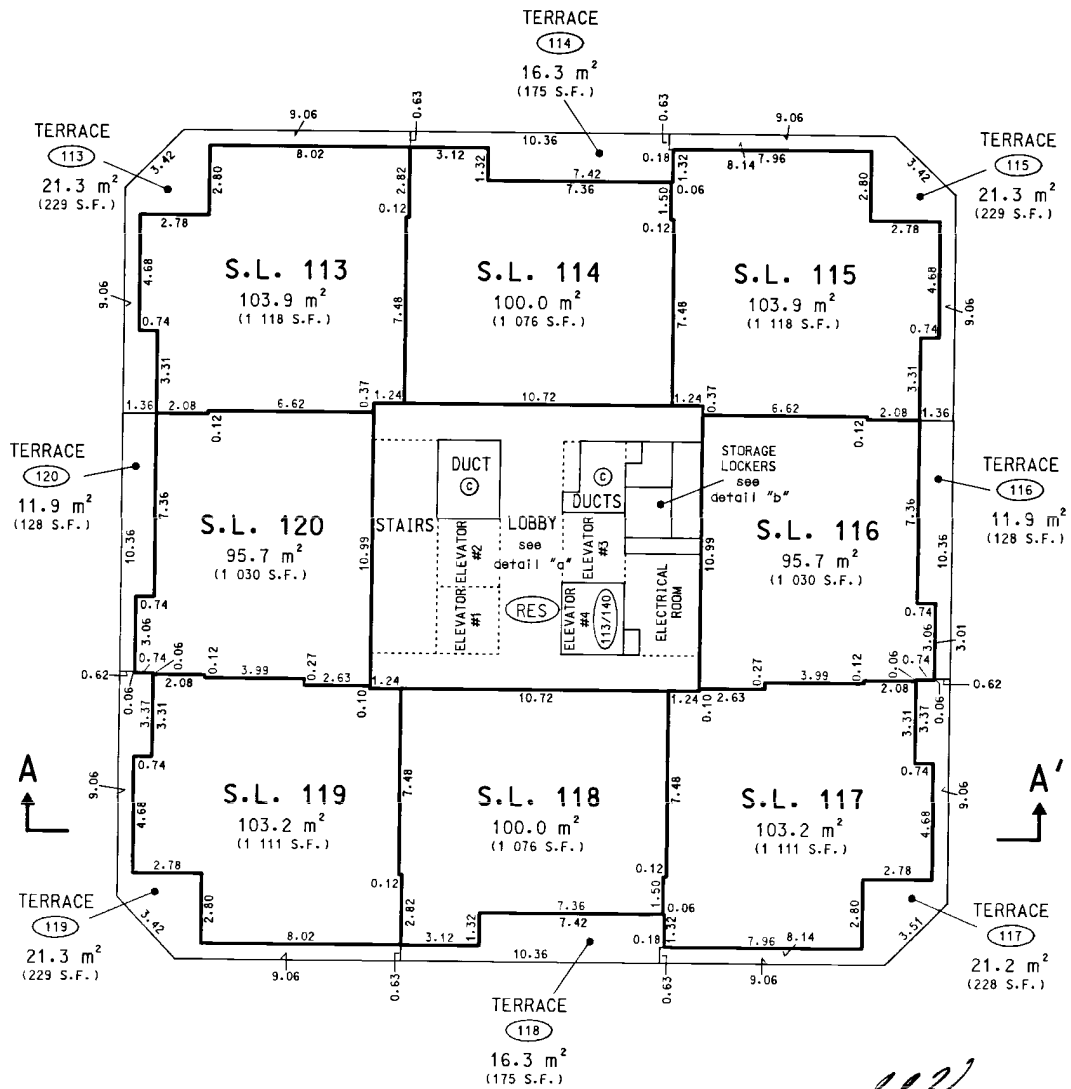
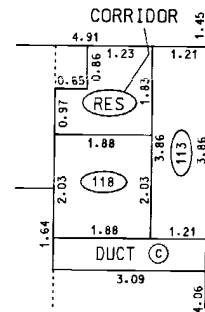
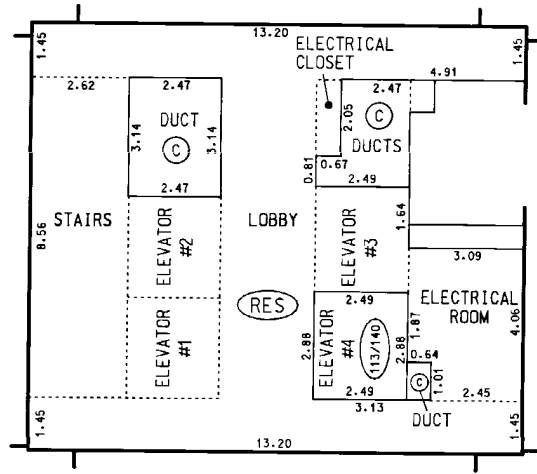


DETAIL "a"

(not to scale)

DETAIL "b"

SCALE 1:100

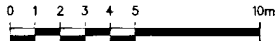


FILED LMS1757 U96683 2006-08-23-08:45:55:247477

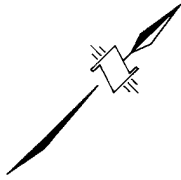
11th FLOOR

STRATA PLAN LMS 1757

SCALE 1:200

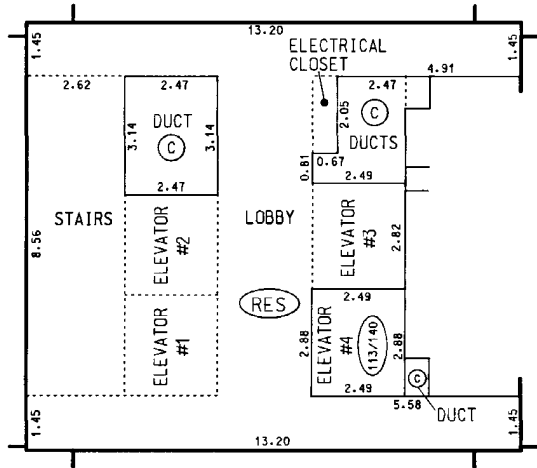


(ALL DIMENSIONS ARE IN METRES)



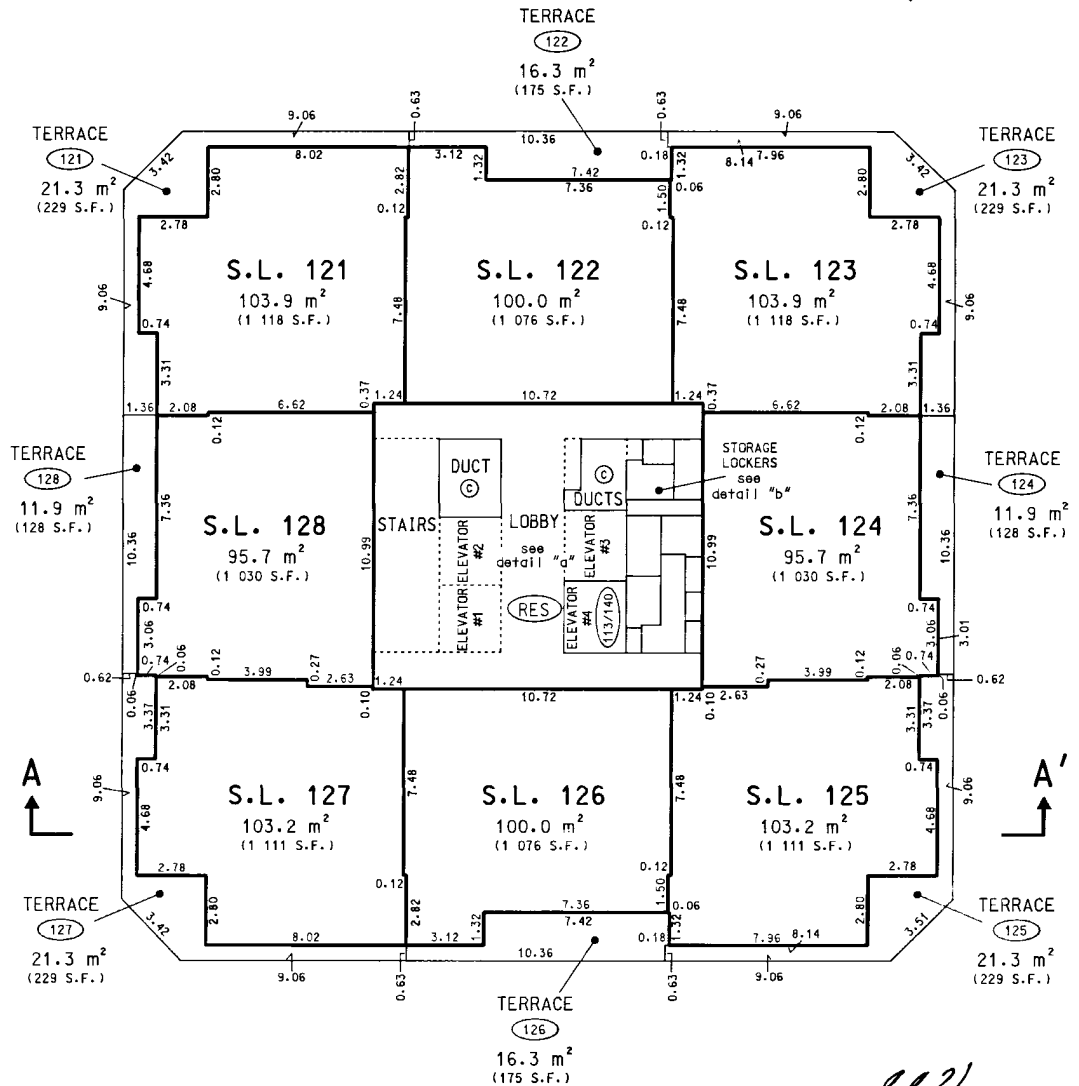
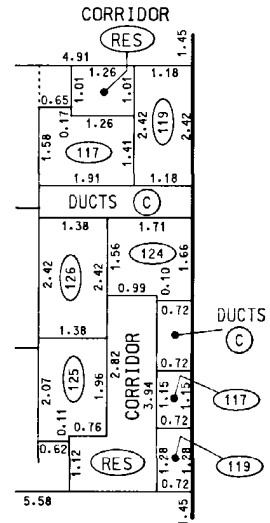
DETAIL "a"

(not to scale)



DETAIL "b"

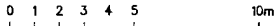
SCALE 1:100



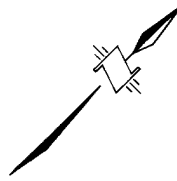
12th FLOOR

STRATA PLAN LMS 1757

SCALE 1:200

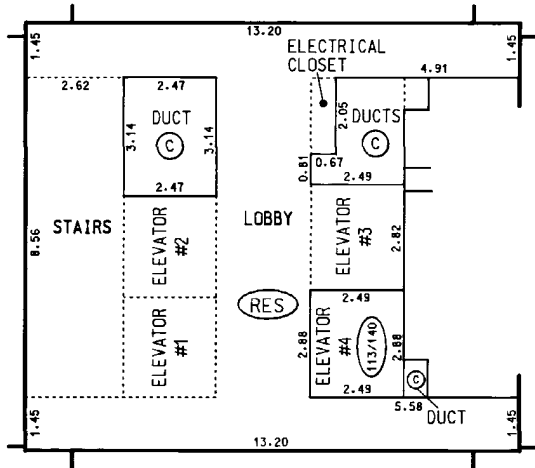


(ALL DIMENSIONS ARE IN METRES)



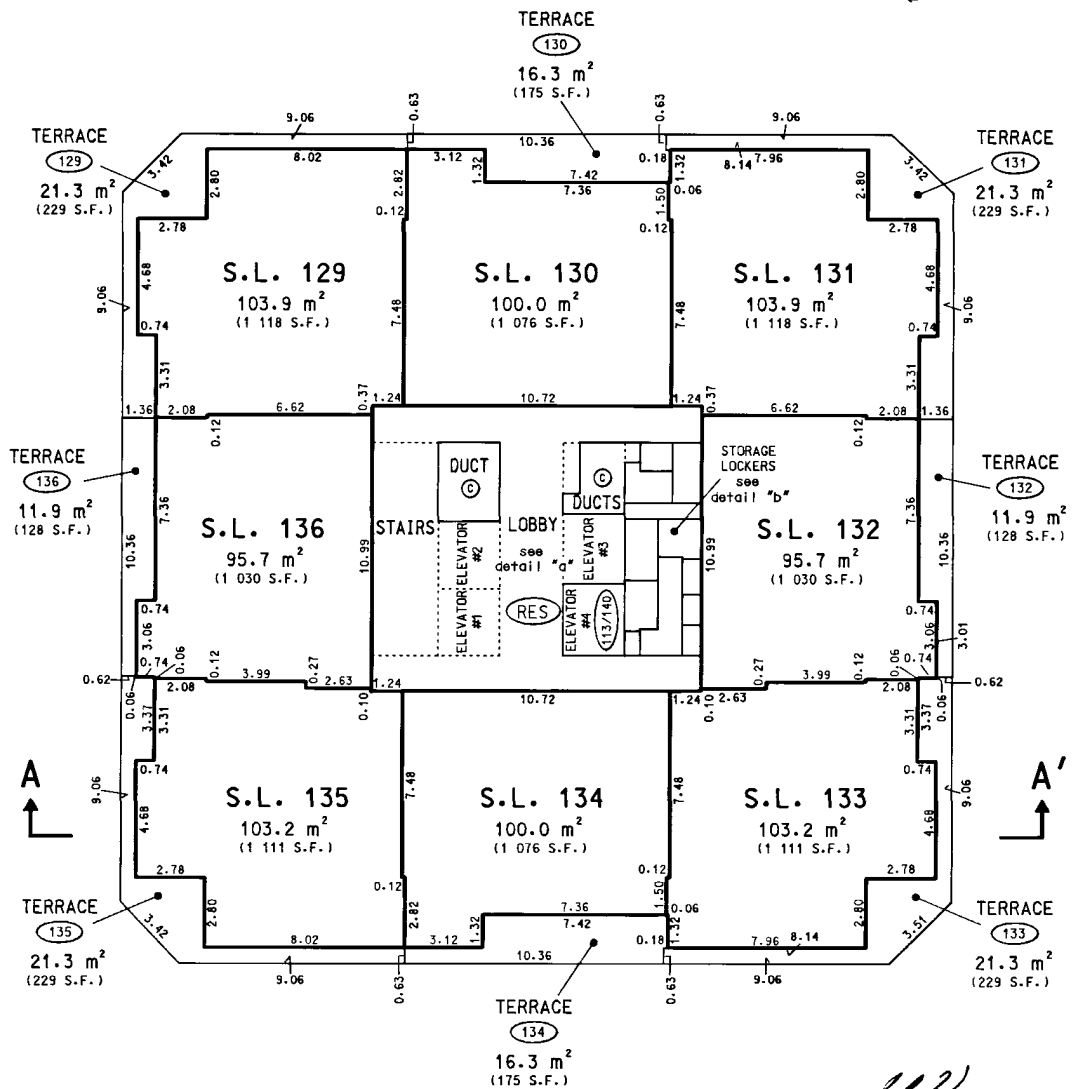
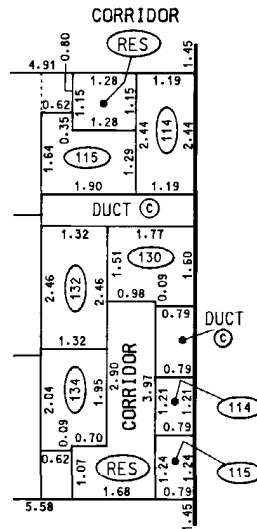
DETAIL "a"

(not to scale)



DETAIL "b"

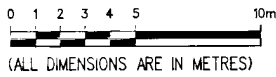
SCALE 1:100



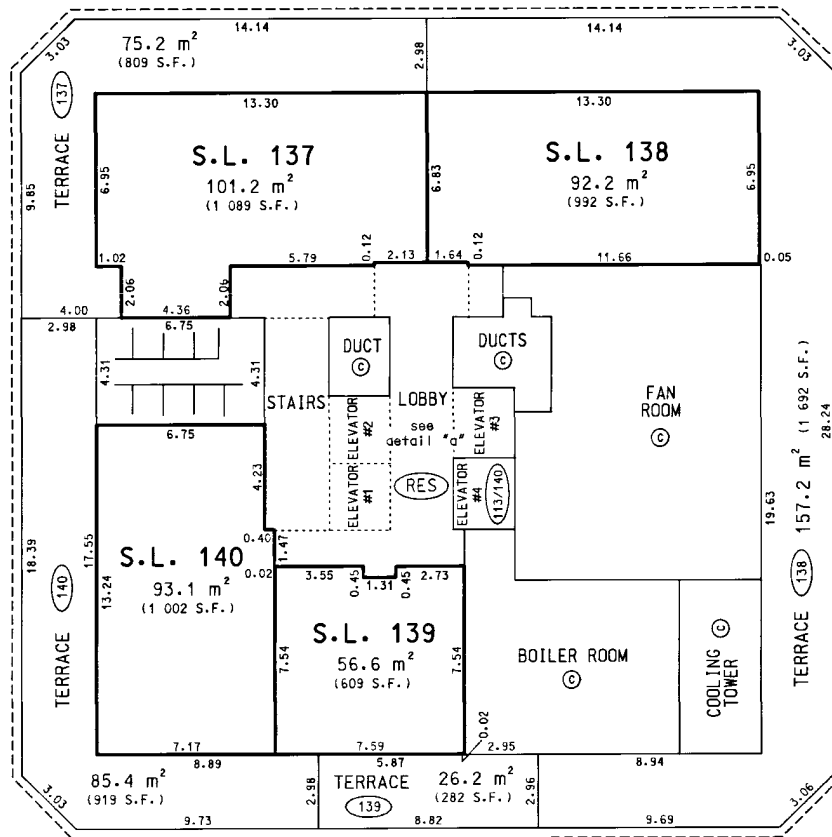
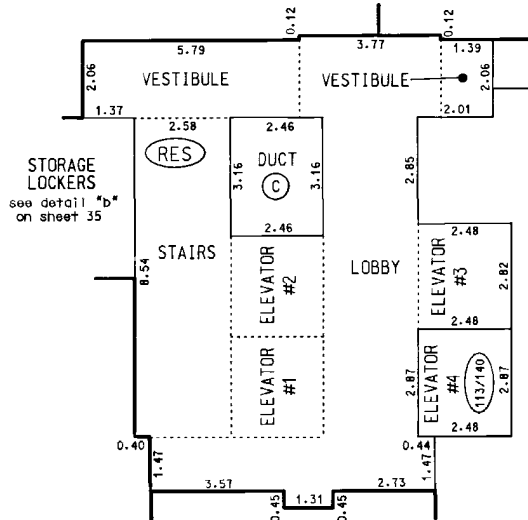
PENTHOUSE

STRATA PLAN LMS 1757

SCALE 1:200



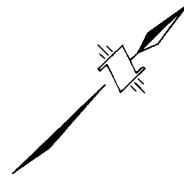
DETAIL "a" (not to scale)



FILED LMS1757 U96683 2006-08-23-08:45:55:247477

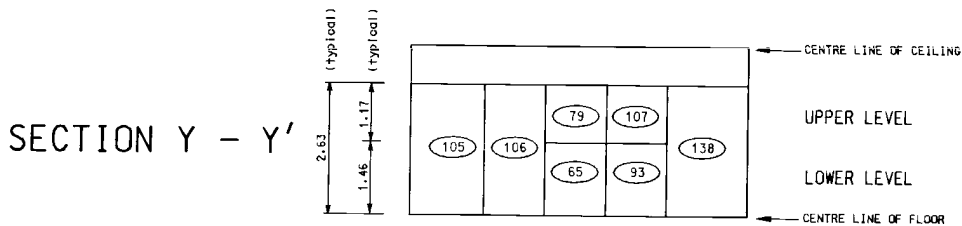
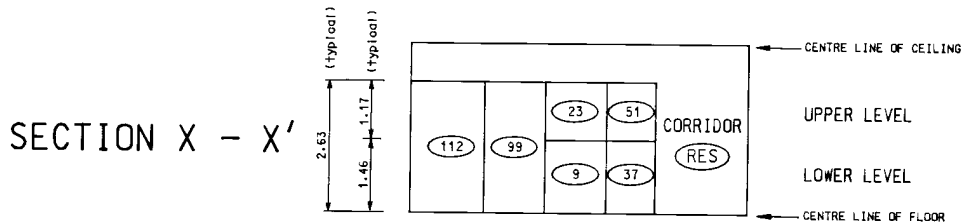
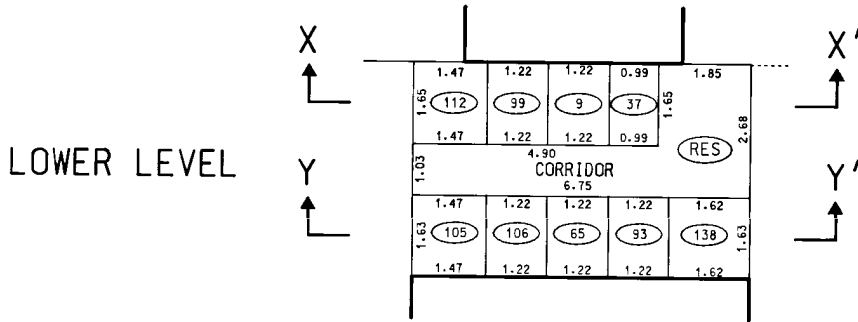
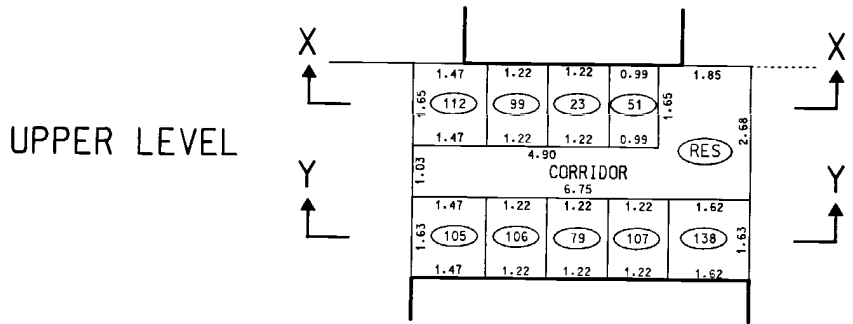
PENTHOUSE

STRATA PLAN LMS 1757



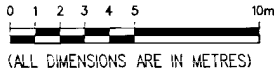
STORAGE LOCKERS DETAIL "b"

SCALE 1:100

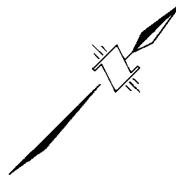


UPPER PENTHOUSE

SCALE 1:200

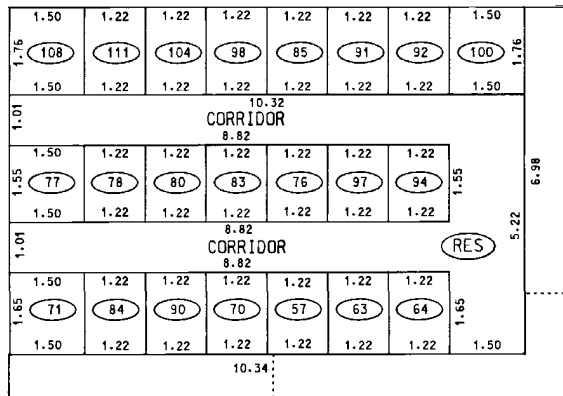


STRATA PLAN LMS 1757



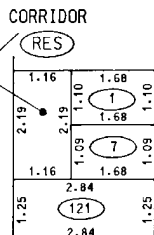
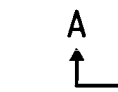
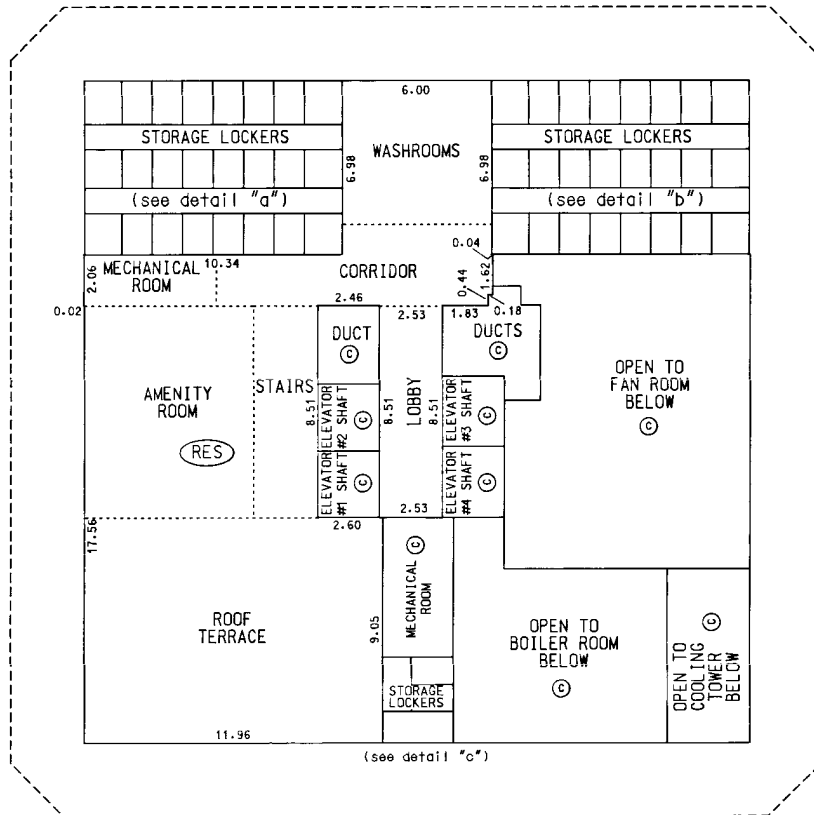
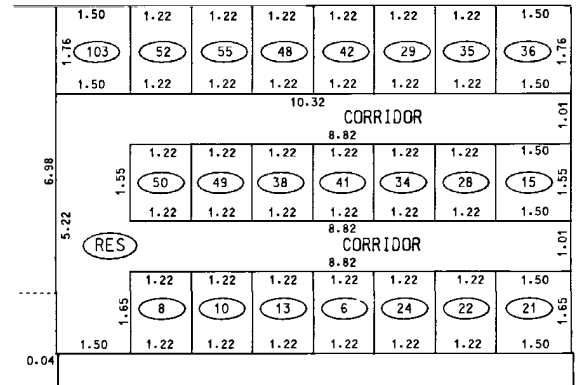
DETAIL "a"

SCALE 1:100



DETAIL "b"

SCALE 1:100



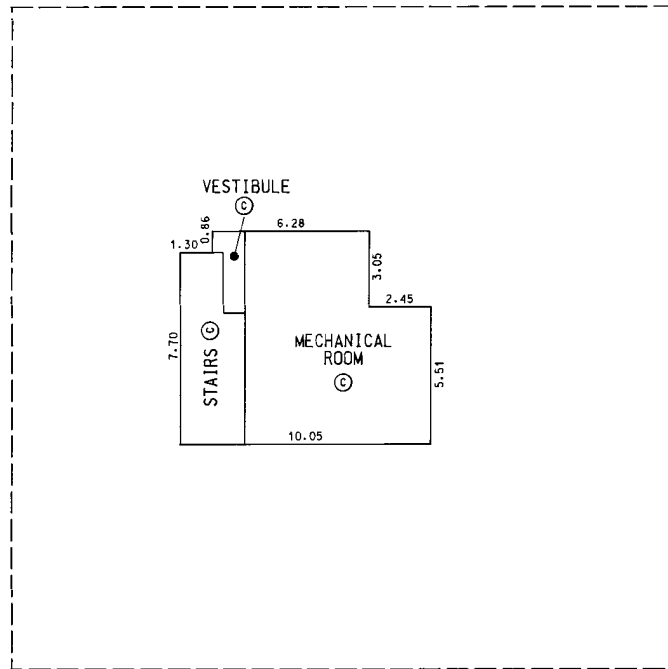
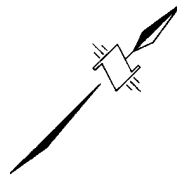
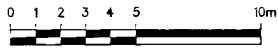
DETAIL "c"

SCALE 1:100

MECHANICAL ROOF

STRATA PLAN LMS 1757

SCALE 1:200



A
↑

A'
↑

