

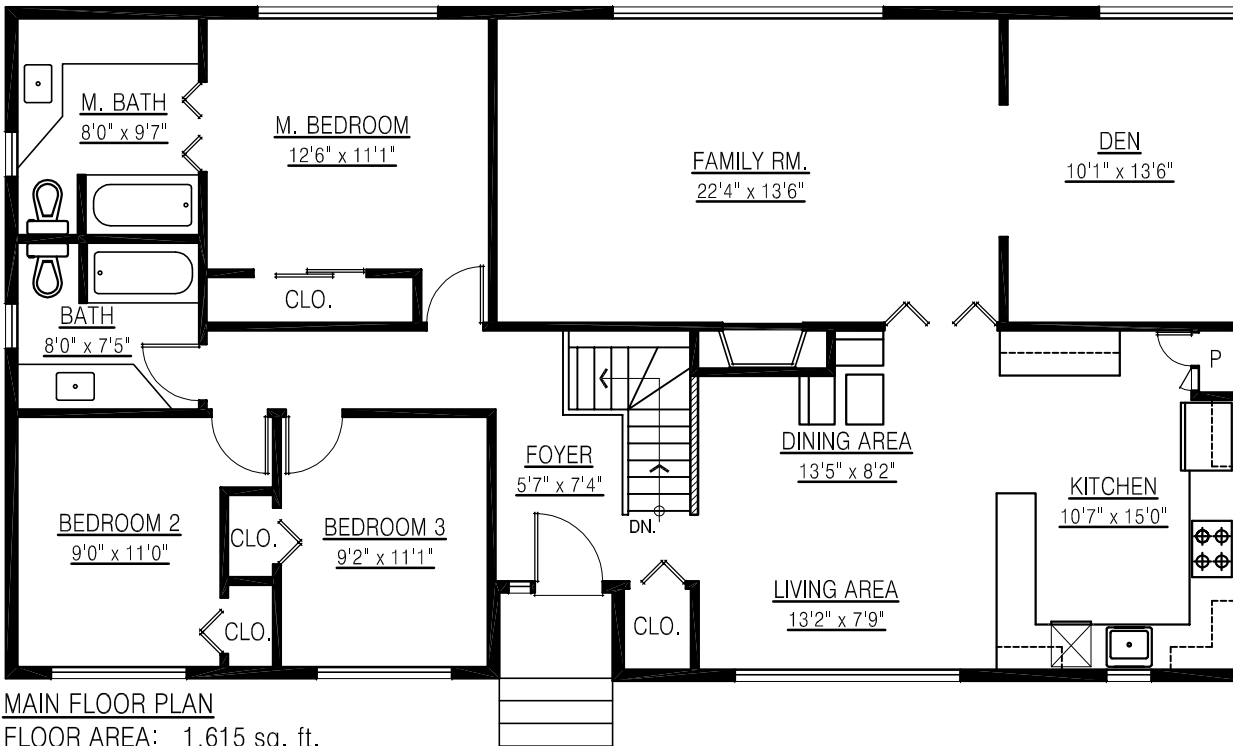
**Gary Born**  
**604-990-6464**

**Prudential Sussex Rlty-G.Born**  
**www.garyborn.com**  
**gary@garyborn.com**

**885 Beaconfield Rd.**  
**North Vancouver, BC**

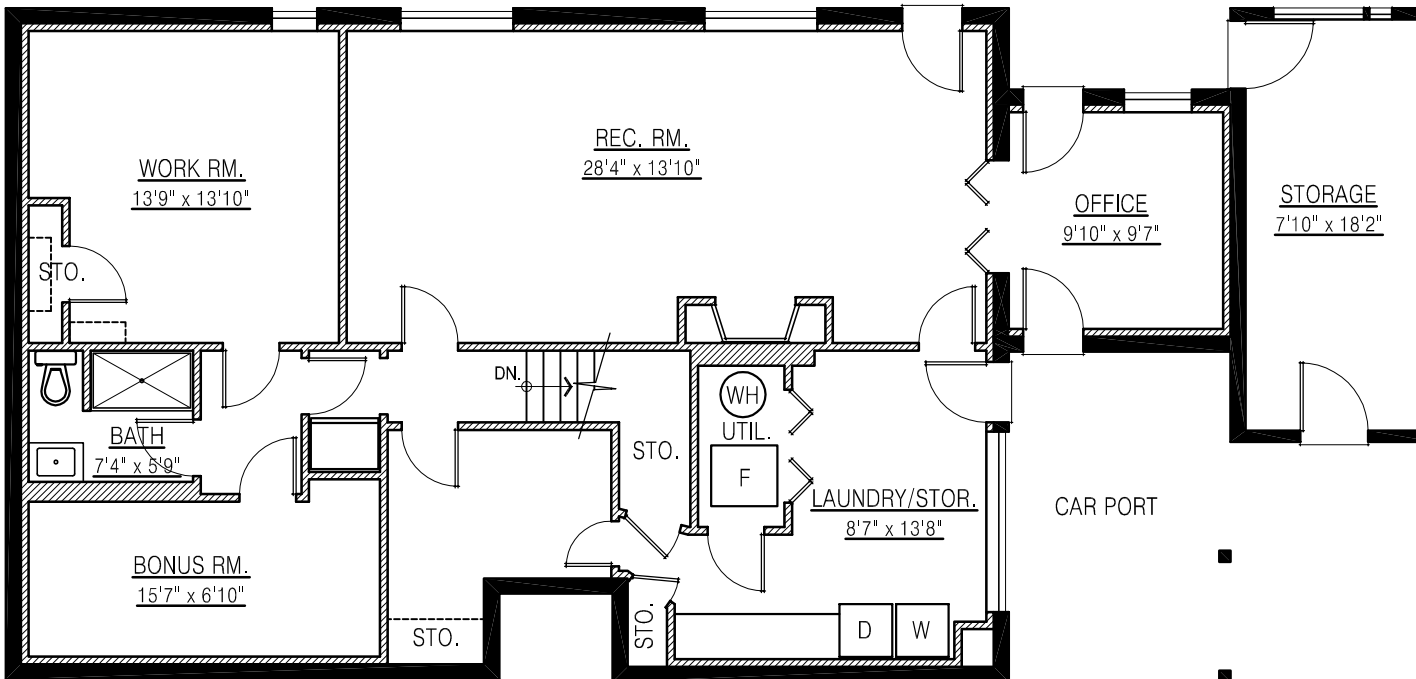
Main Floor: 1,615 sq. ft.  
Lower Floor: 1,416 sq. ft.  
Total: 3,031 sq. ft.

Storage: 173 sq. ft.



**MAIN FLOOR PLAN**

FLOOR AREA: 1,615 sq. ft.



**LOWER FLOOR PLAN**

FLOOR AREA: 1,416 sq. ft.

