

**MAIN FLOOR PLAN**  
FLOOR AREA: 2,331 sq.ft.

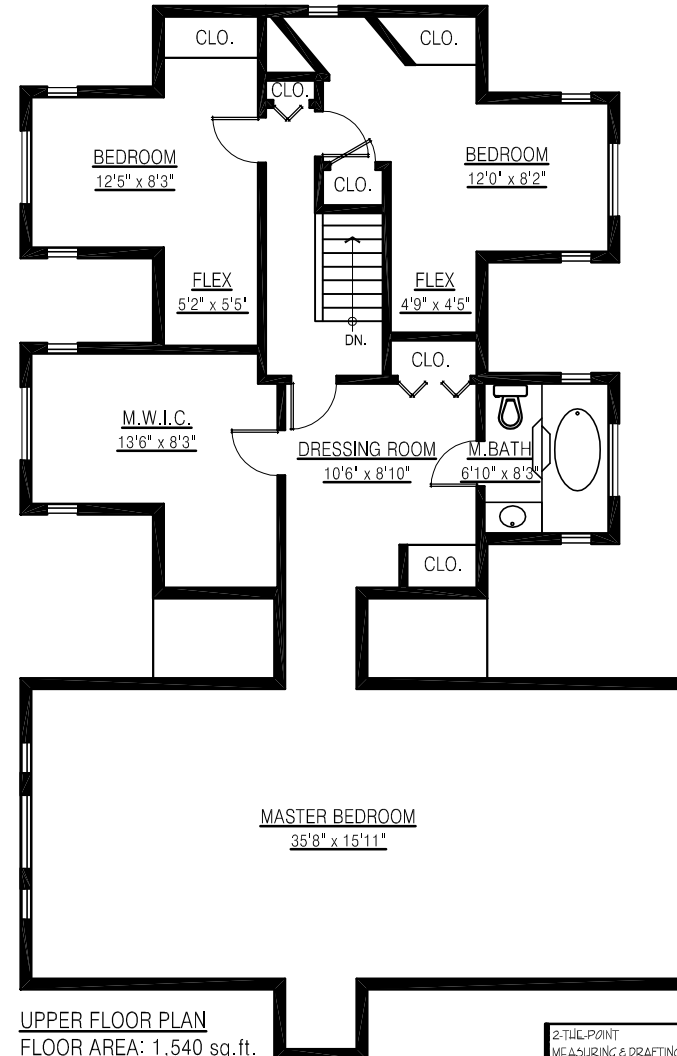
**7011 Lefeuve Rd.**  
**Abbotsford, BC**



*Karen M. Ashby*  
*Christina M. Ashby*

Main Floor: 2,331 sq. ft.  
Upper Floor: 1,540 sq. ft.  
Total: 3,871 sq. ft.  
  
Deck: 1,087 sq. ft.

**Phone: 604-263-1144**  
**www.karenashby.com**



**UPPER FLOOR PLAN**  
FLOOR AREA: 1,540 sq.ft.