

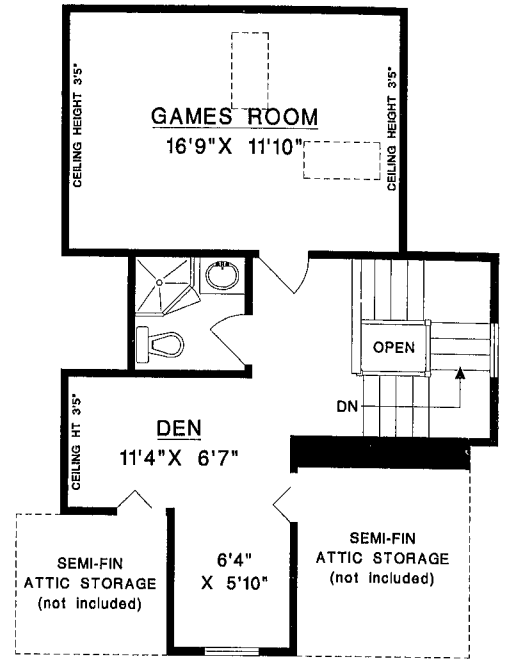
DETACHED GARAGE  
20'1" X 19'3"

5138 WESTMINSTER LANE  
LADNER, BC

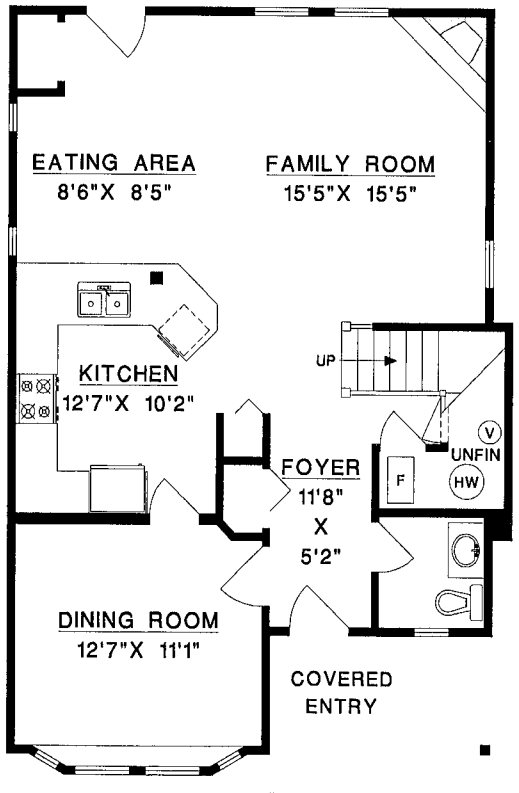
MAIN LEVEL*	875 SQFT
UPPER LEVEL	875 SQFT
LOFT LEVEL**	495 SQFT
<b>TOTAL</b>	<b>2245 SQFT</b>

DET. GARAGE	425 SQFT
BALCONY	57 SQFT

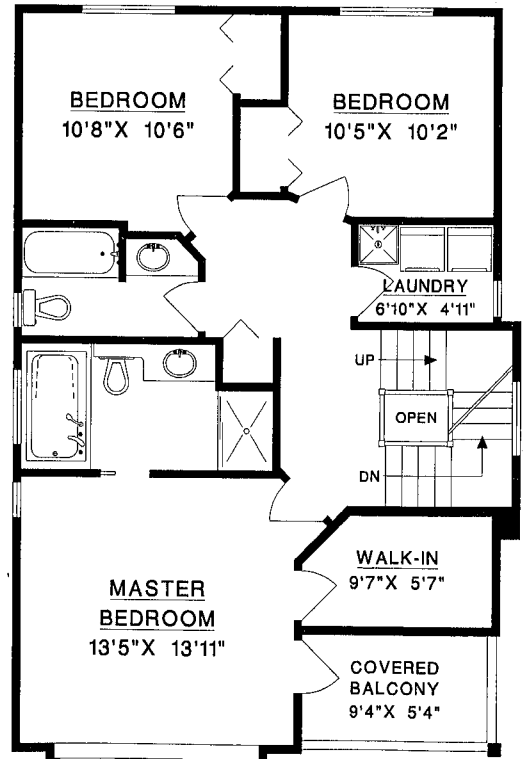
\* INCLUDES UNFINISHED FURNACE AREA (50 SQFT)  
\*\* INCLUDES AREAS OF LOWER CEILING HEIGHT



LOFT LEVEL



MAIN LEVEL



UPPER LEVEL

