

1951 CREELMAN AVENUE, VANCOUVER

TOTALS**

Main Floor: 753 sq.ft.
 Upper Level*: 255 sq.ft.
 Lower Level: 580 sq.ft.
 TOTAL: 1,588 sq.ft.

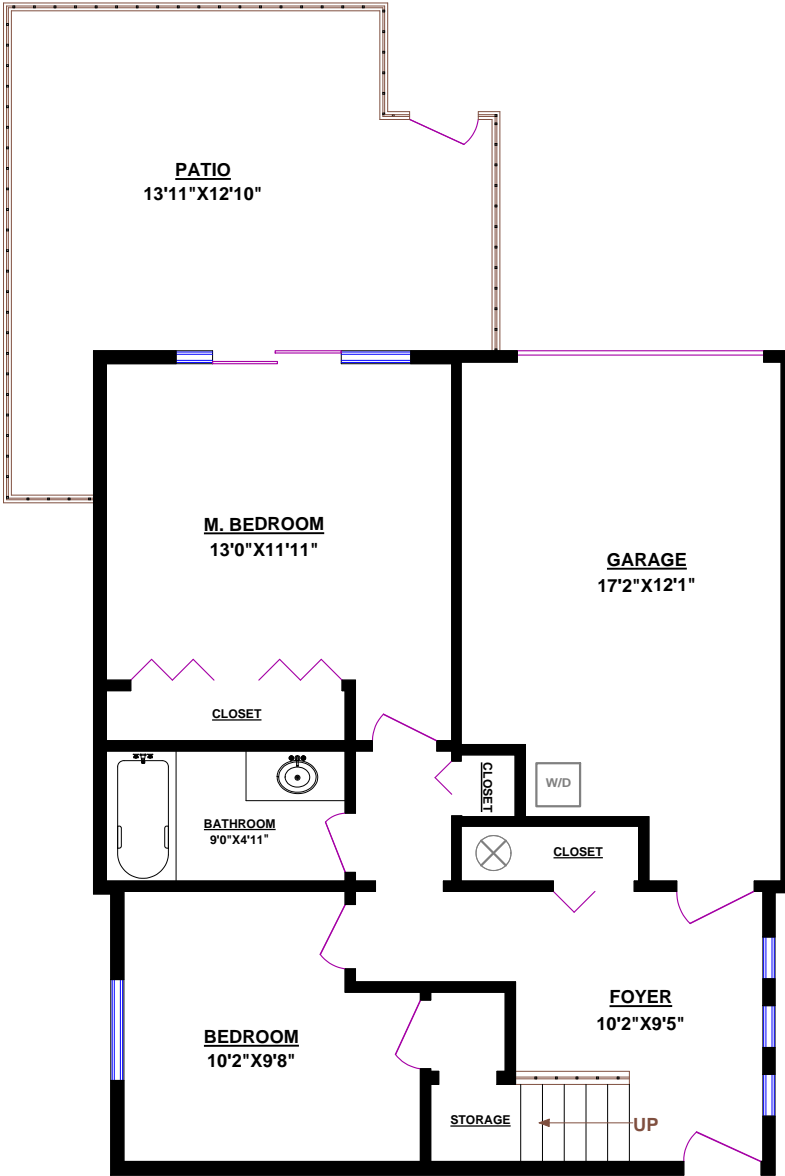
OTHER AREAS:

Garage: 227 sq.ft.
 Patio: 232 sq.ft.
 Deck (Upper): 177 sq.ft.
 Deck (Main): 99 sq.ft.

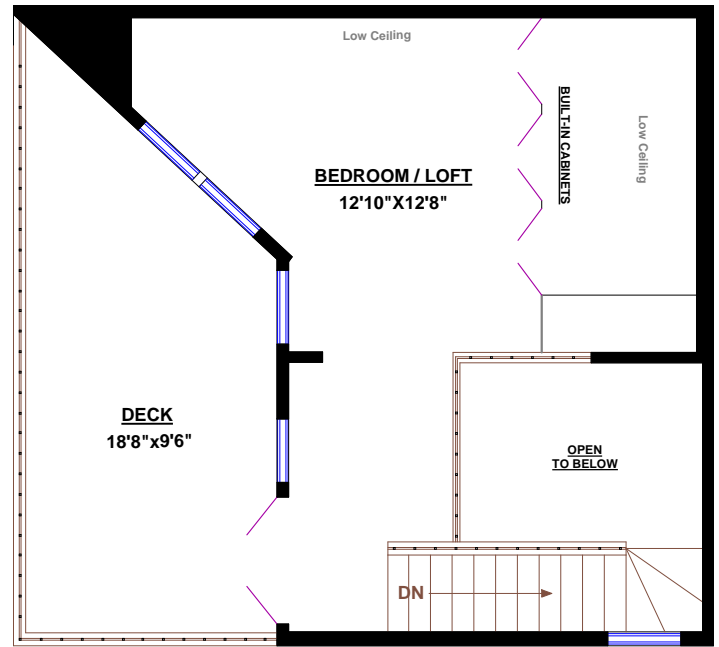
* Does not include low ceiling (h<5') area of 121 sq.ft.

** Measured to exterior of walls and to the middle of the common walls

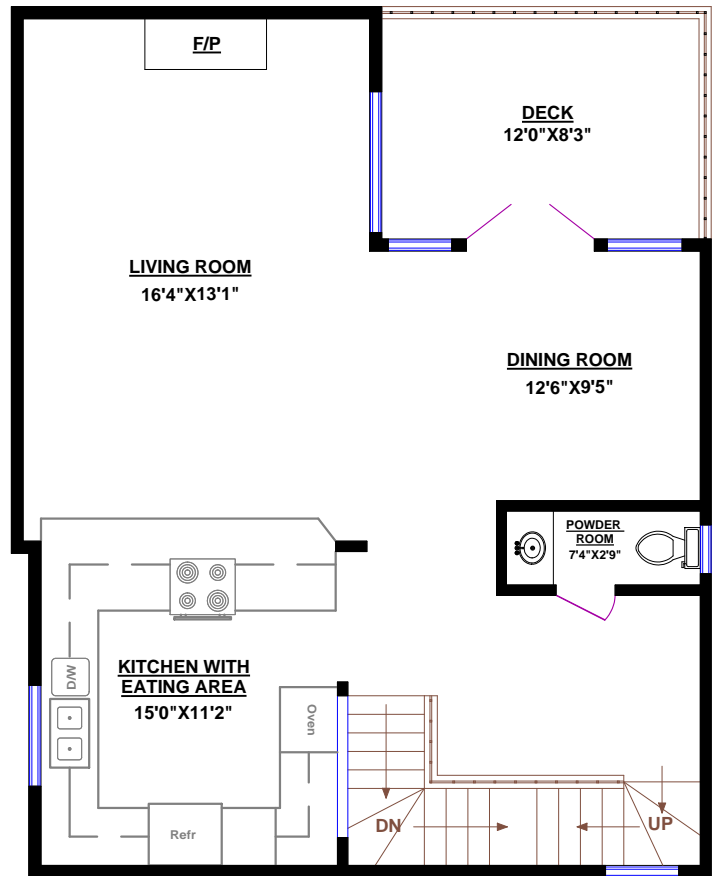
** These measurements are not taken from the Strata Plan.



LOWER LEVEL



UPPER LEVEL



MAIN FLOOR

