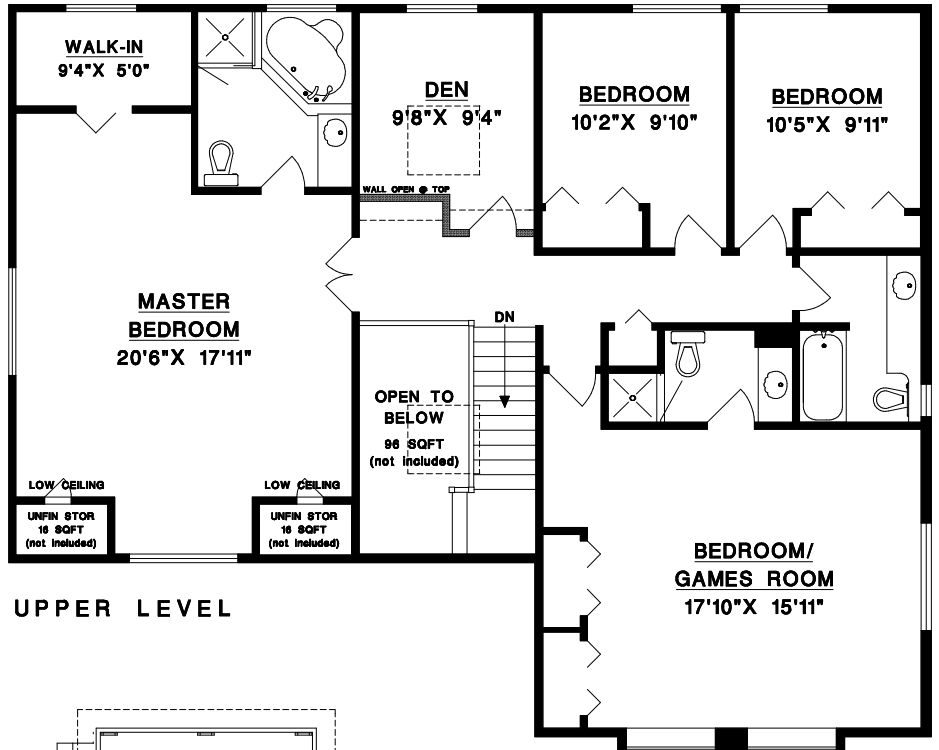


5572 SUMMER WAY
DELTA, BC

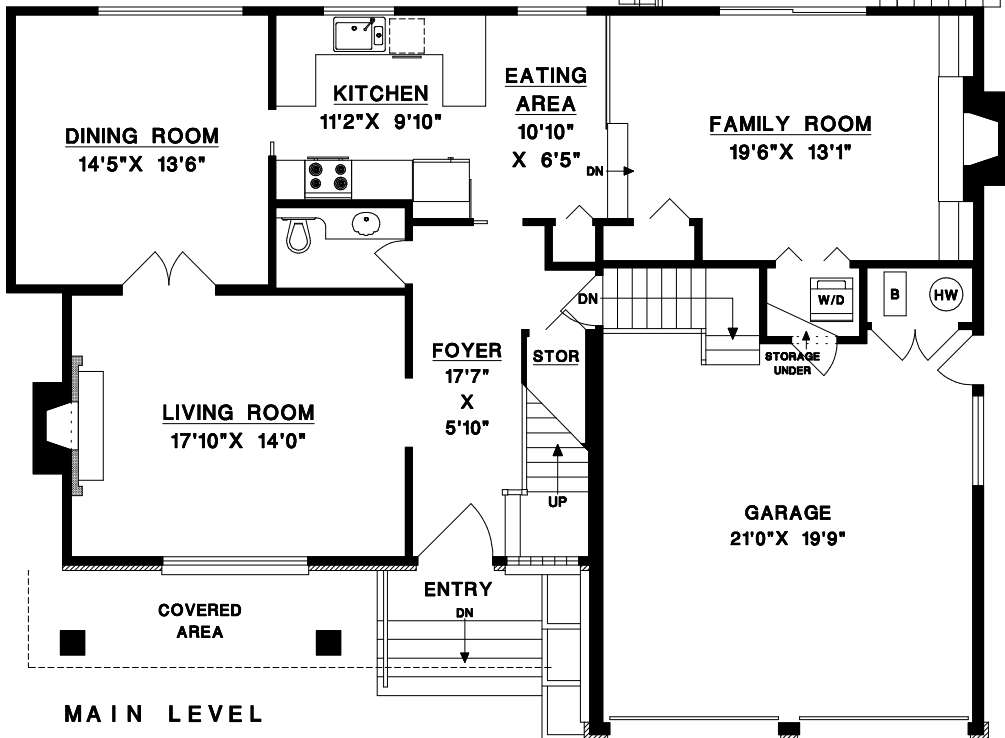
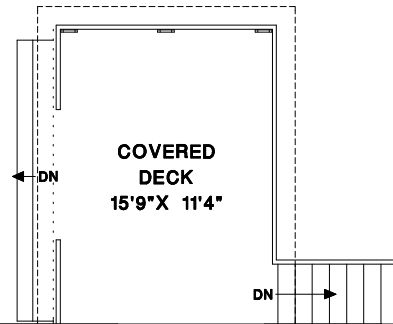
MAIN LEVEL	1219	SQFT
UPPER LEVEL*	1535	SQFT
TOTAL	2754	SQFT

GARAGE**	496	SQFT
COVERED DECK	188	SQFT

* INCLUDES AREA OF LOWER CEILING HEIGHT
** INCLUDES UNFIN BOILER ROOM (21 SQFT)



UPPER LEVEL



MAIN LEVEL

