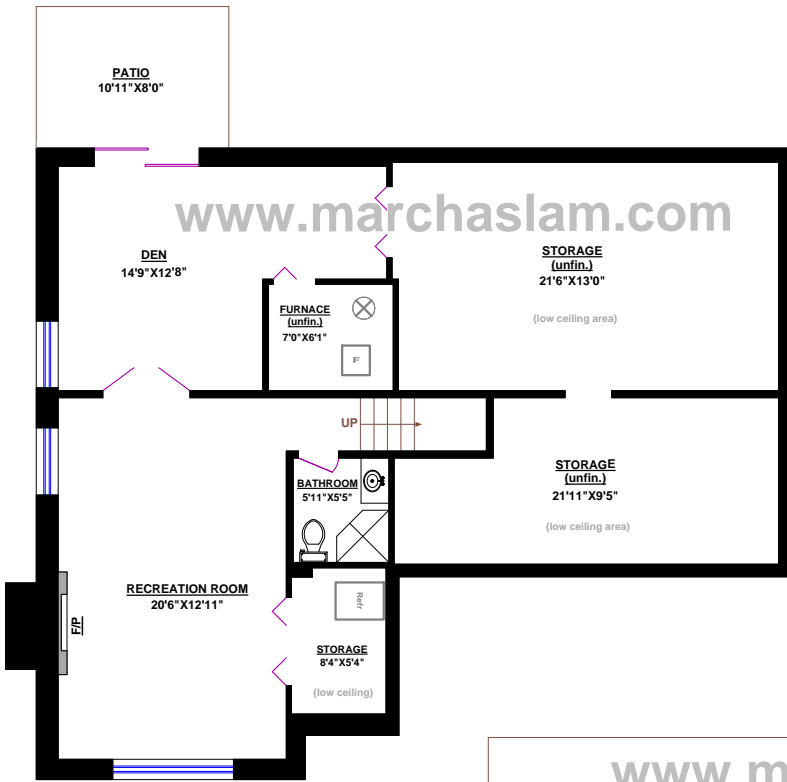




MARC HASLAM
Prudential Sussex Realty

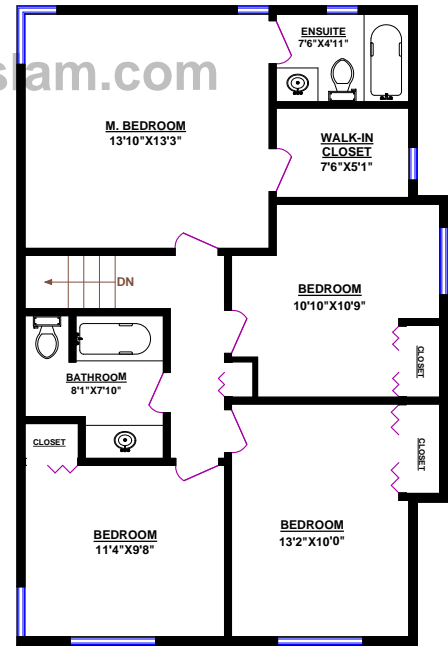
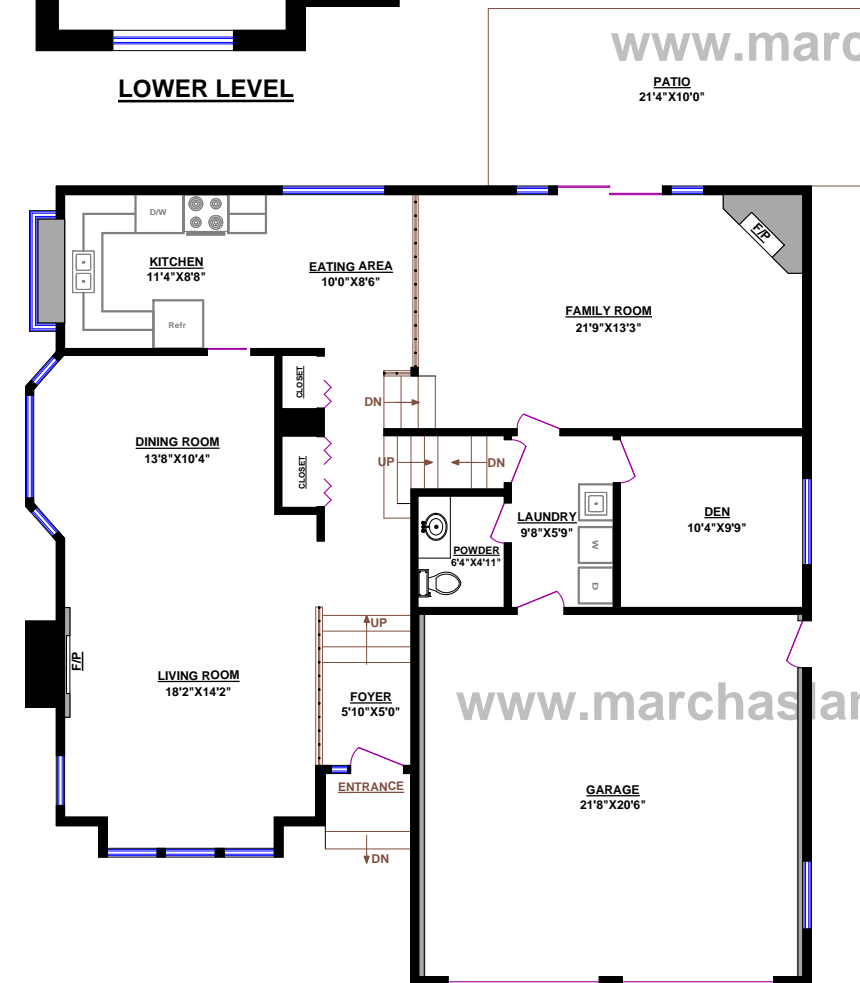
604-990-6467 direct
 www.marchaslam.com
 marc@marchaslam.com



4101 RUSSELL CT, NORTH VANCOUVER

TOTALS			OTHER AREAS:
Main Floor (finished):	1,298 sq.ft.		Storages (unfin.)**: 544 sq.ft.
Upper Level (finished):	850 sq.ft.		Storage**: 58 sq.ft.
Lower Level (finished)*:	611 sq.ft.		Garage: 471 sq.ft.
TOTAL FINISHED*:	2,759 sq.ft.		
Lower Level (unfinished)*:	44 sq.ft.		
GRAND TOTAL*:	2,803 sq.ft.		

* Excludes low ceiling areas listed in Other Areas
 ** Low ceiling areas



0 1 2 3 4 5 6

© Vancouver Realty Support Group Inc., (604) 761-7919
 www.floorplansvancouver.com