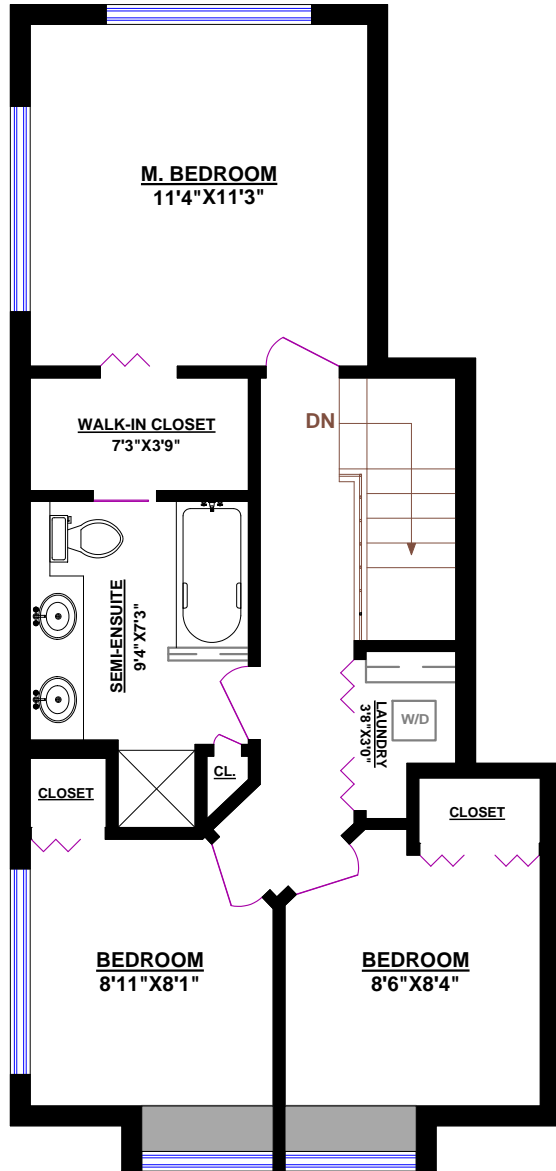


6681 PRENTER STREET, BURNABY

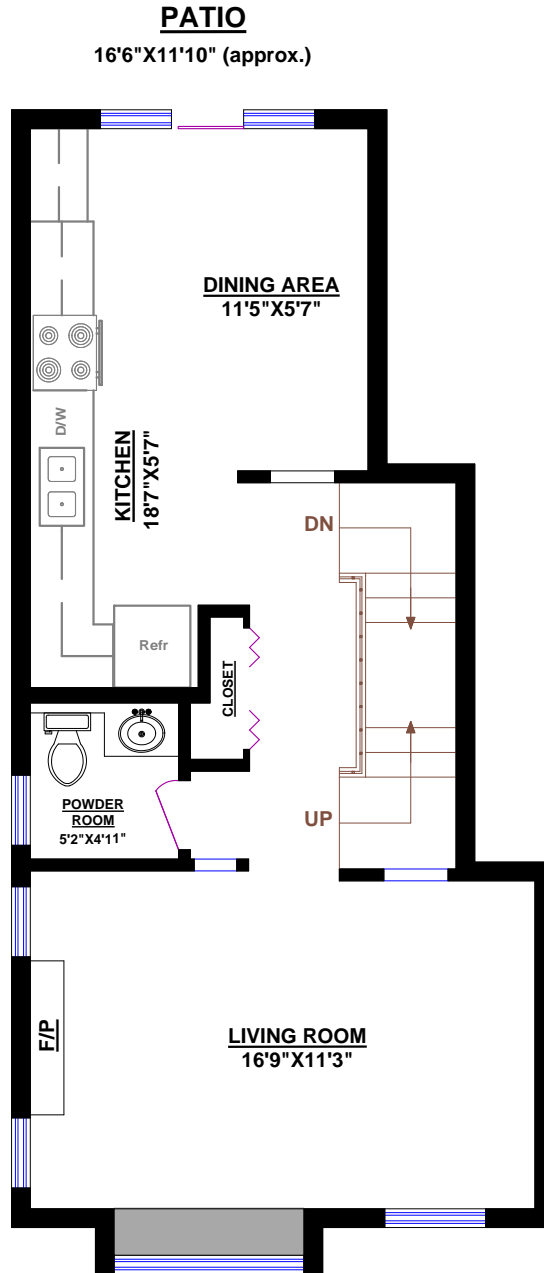
TOTALS*
 Main Floor: 554 sq.ft.
 Upper Level: 559 sq.ft.
 Lower Level: 23 sq.ft.
GRAND TOTAL: 1,136 sq.ft.

OTHER AREAS:
 Garage: 503 sq.ft.
 Patio: 195 sq.ft. (approx.)

* Measured to exterior of walls and to the middle of the common walls
 * These measurements are not taken from the Strata Plan.



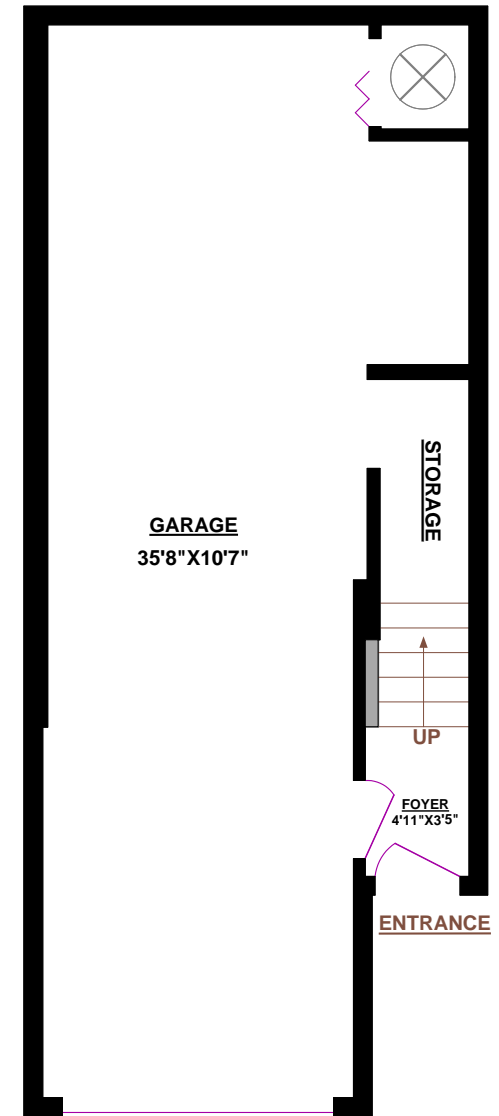
UPPER LEVEL



MAIN FLOOR

PATIO

16'6" X 11'10" (approx.)



LOWER LEVEL

