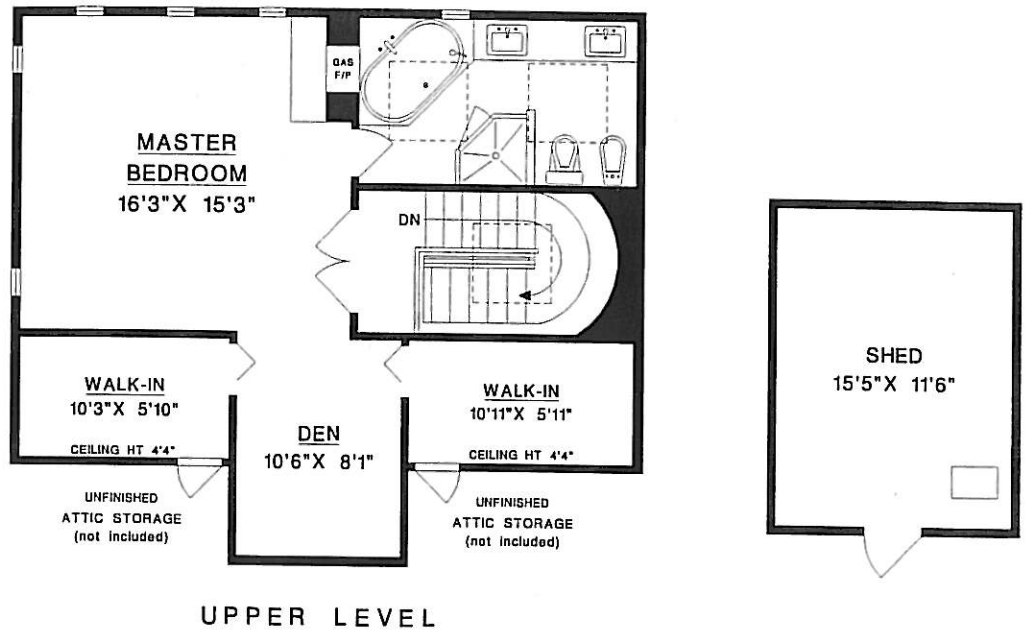


TERI STEELE

604 897-2010

teri@teristeele.com



4563 - 46A STREET
LADNER, BC

MAIN LEVEL	1363	SQFT
UPPER LEVEL *	737	SQFT
TOTAL	2100	SQFT

GARAGE	232	SQFT
SHED	201	SQFT
DECK (& STAIRS)	404	SQFT

* INCLUDES AREAS OF LOWER CEILING HEIGHT

