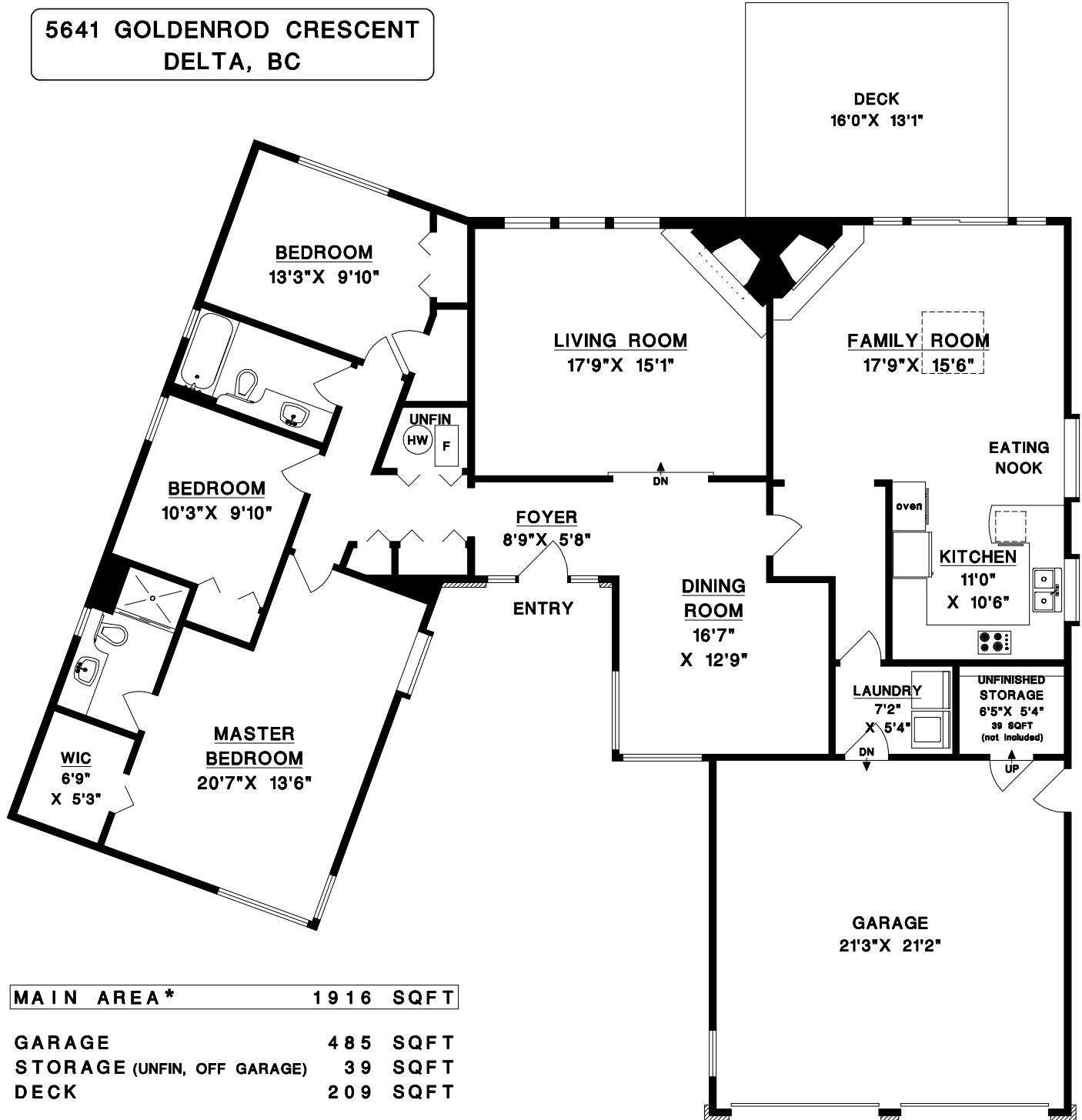


5641 GOLDENROD CRESCENT
 DELTA, BC



MAIN AREA * 1916 SQFT

GARAGE 485 SQFT
 STORAGE (UNFIN, OFF GARAGE) 39 SQFT
 DECK 209 SQFT

* INCLUDES UNFINISHED FURNACE ROOM (17 SQFT)

