

LAUREN MOON

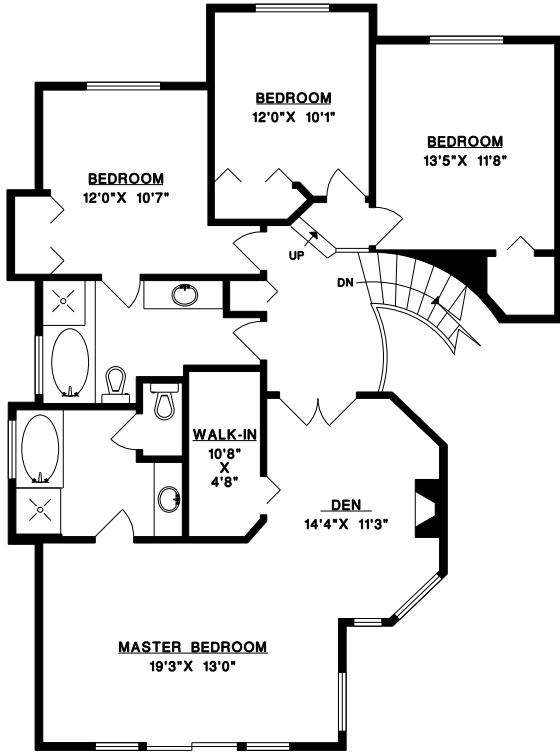
cell: 604-313-9966



Prudential

Sussex Realty

2996 LONSDALE AVE.
NORTH VANCOUVER
V7N 3J4



**908 SAUVE COURT
NORTH VANCOUVER**

MAIN FLOOR 1,552 SQ.FT.
UPPER FLOOR 1,319 SQ.FT.
LOWER FLOOR 1,566 SQ.FT.
TOTAL 4,437 SQ.FT.
GARAGE 435 SQ.FT.

