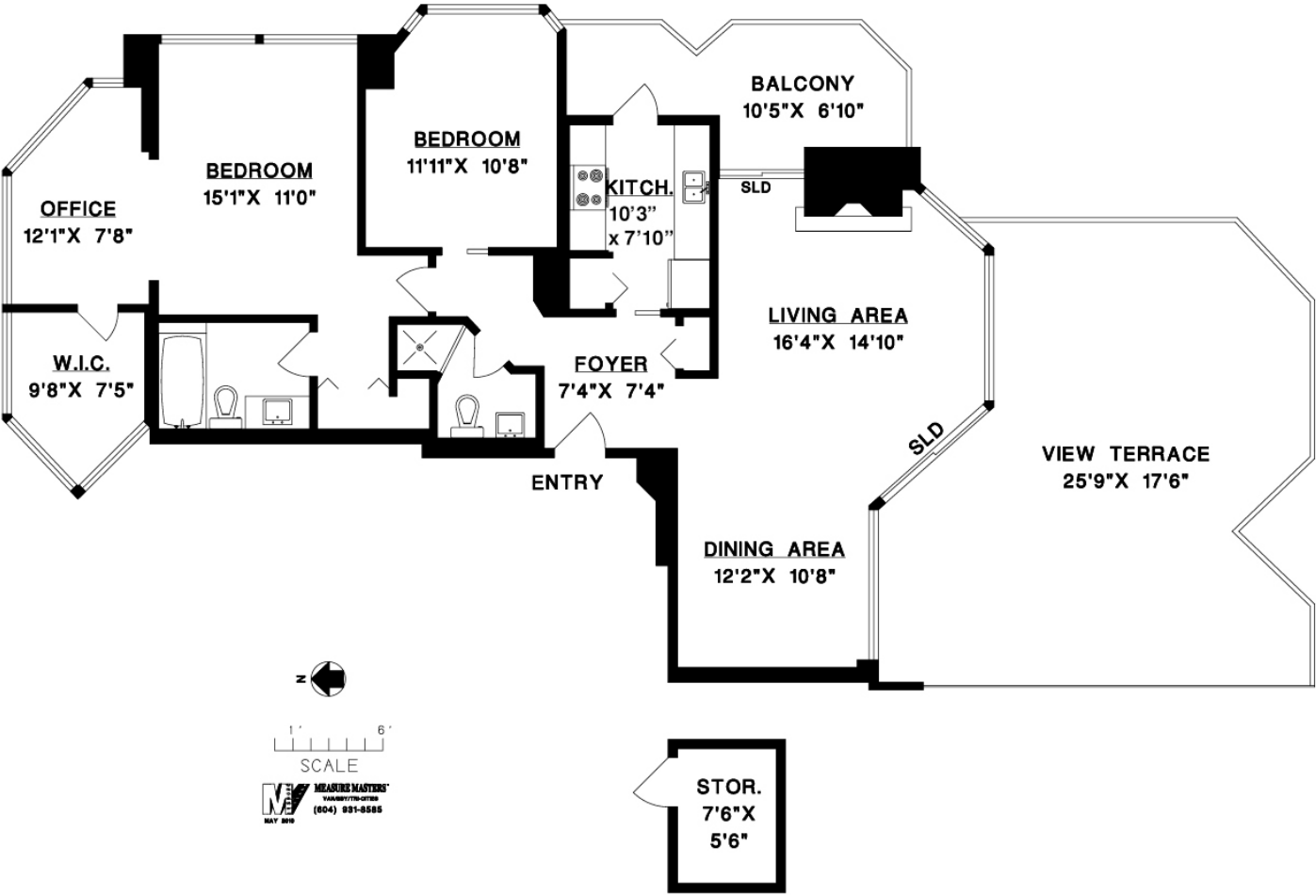


**GREGG
BAKER
& JESSE
LAVER**

PH1800-1625 Hornby Street

- Total Interior 1,235 sqft
(office & walk-in closet are LCP on strata plan)
- Storage Room on the same Floor 48 sqft
- Terrace 515 sqft
- Balcony 127 sqft



Sotheby's
INTERNATIONAL REALTY

Canada