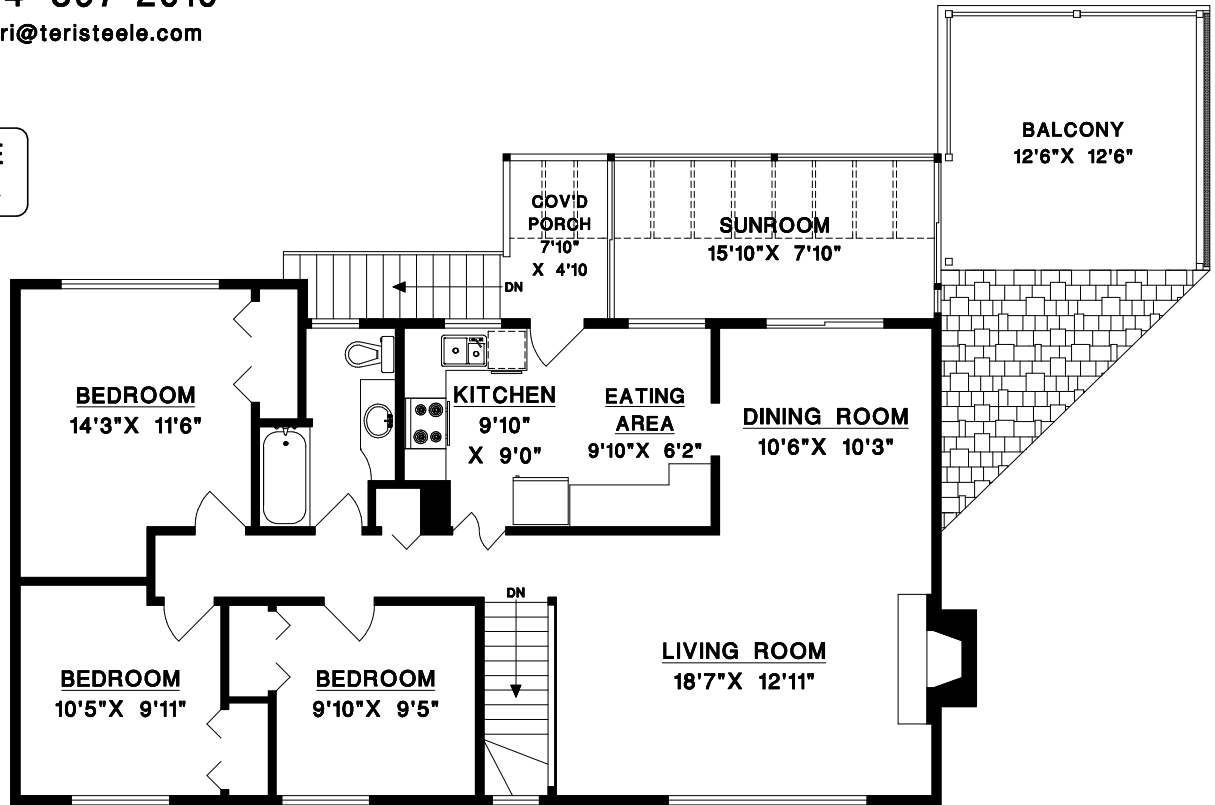


5523 - 8B AVENUE  
TSAWWASSEN, BC

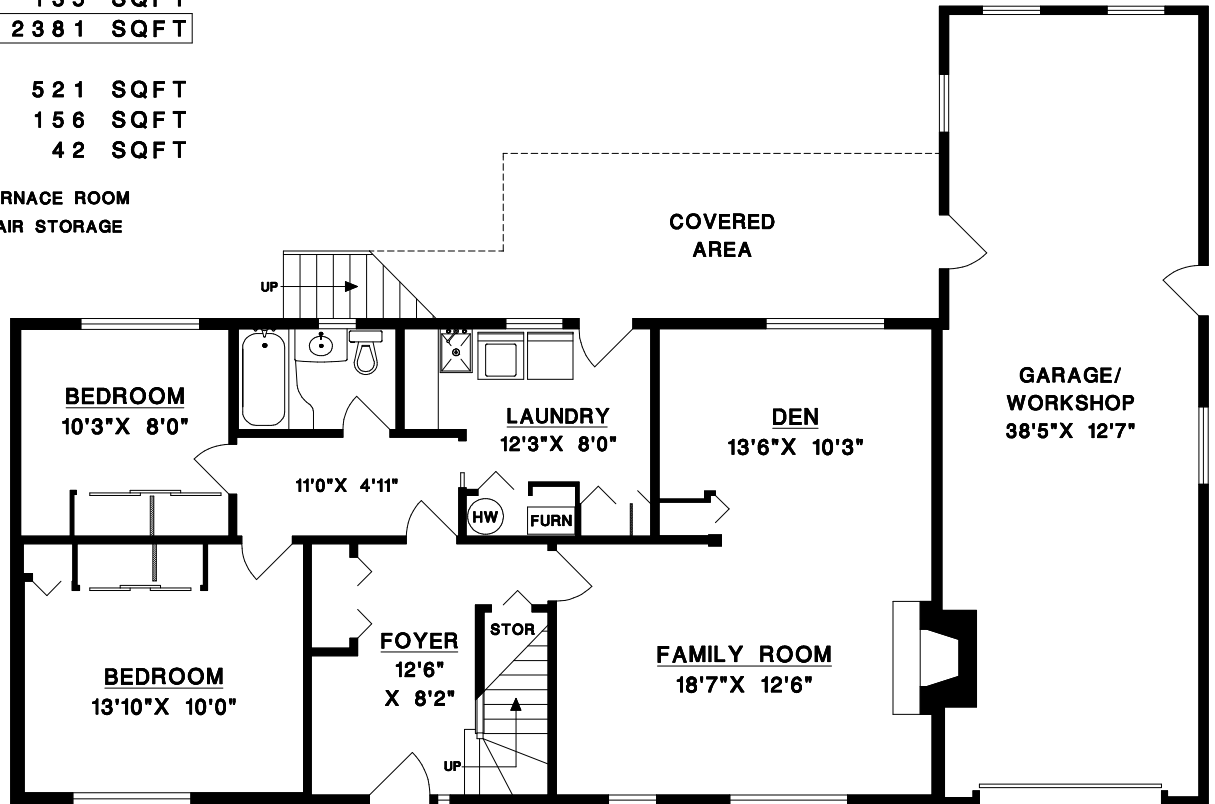


MAIN LEVEL

MAIN LEVEL	1136 SQFT
LOWER LEVEL*	1110 SQFT
<b>TOTAL</b>	<b>2246 SQFT</b>
SUNROOM	135 SQFT
<b>TOTAL</b>	<b>2381 SQFT</b>

GARAGE / WORKSHOP	521 SQFT
BALCONY	156 SQFT
COVERED PORCH	42 SQFT

\* INCLUDES UNFINISHED FURNACE ROOM  
& UNFINISHED UNDER-STAIR STORAGE



LOWER LEVEL

